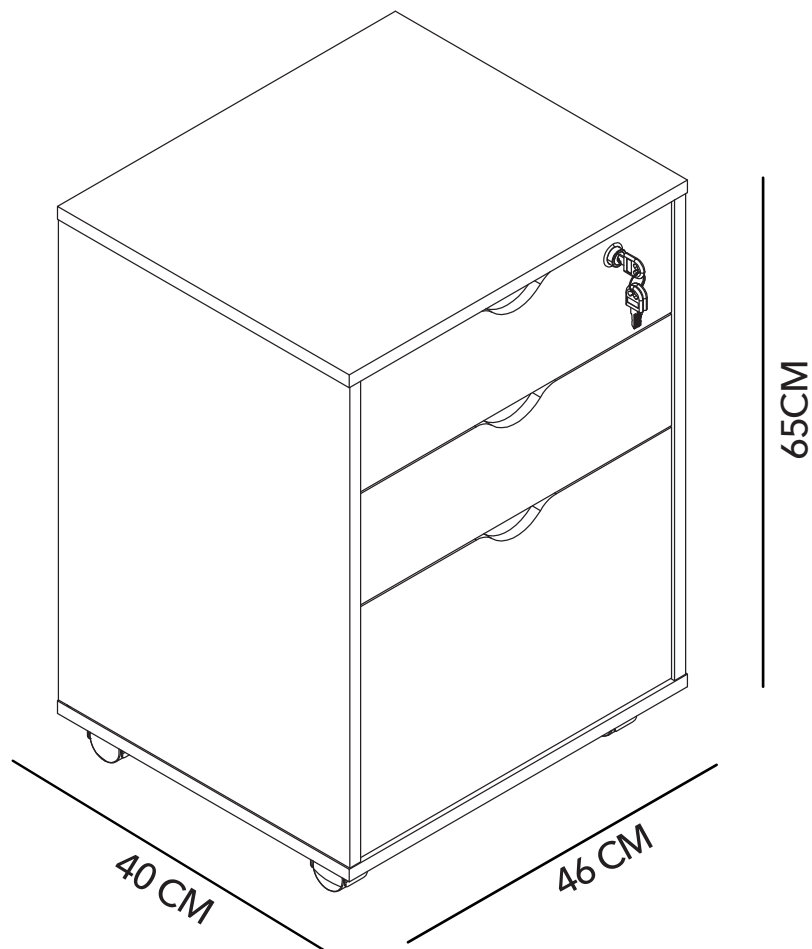
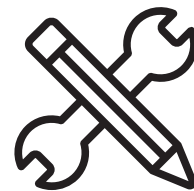




MANUAL DE INSTRUCCIONES

CAJONERA BILL 3.0
MODELO: MB0161OI23-1



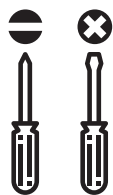


ADVERTENCIA

Siga las instrucciones que se detallan en el manual, si presenta alguna diferencia en el contenido de sus piezas pongase en contacto con la tienda donde fue adquirido.

RECOMENDACIONES

- Estudie atentamente las instrucciones antes del montaje.
- Ordene las piezas que componen el mueble.
- Agrupe y ordene la quincaillería.
- Prepare una zona despejada para el montaje.
- Monte las piezas sin forzar los ensambles, una vez armada toda la estructura, reajuste de forma definitiva.
- Volver a apretar los tornillos después de un tiempo de uso.
- Conserve estas instrucciones de montaje.



Herramientas requeridas
(no incluidas)

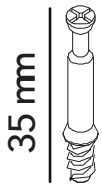


2 personas
para el armado



Producto contenido
en 1 caja

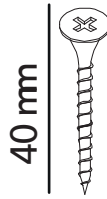
QUINCALIE RÍA



Ax 22



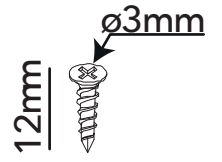
Bx 22



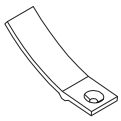
Cx 16



Dx 14



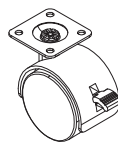
Ex 45



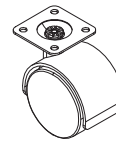
Fx 3



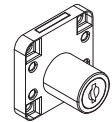
Gx 16



Hx 2



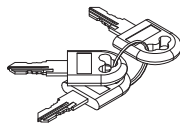
Ix 2



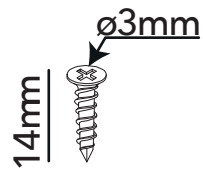
Jx 1



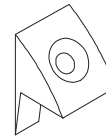
Kx 1



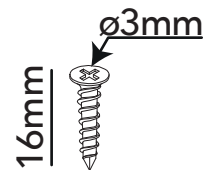
Lx 1



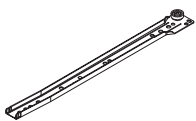
Mx 8



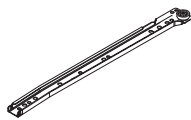
Nx 8



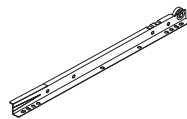
Ox 4



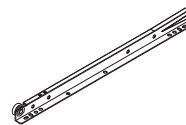
CLx 3



CRx 3

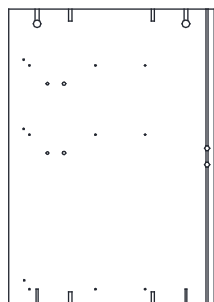


DL x 3



DRx 3

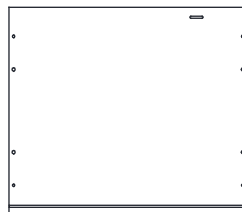
PIEZAS



③ x1



④ x1



① x1



⑦ x2



② x1



⑰ x1



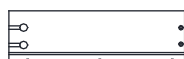
⑥ x1



⑫ x3



⑤ x2



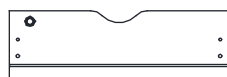
⑨ x2



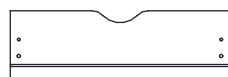
⑩ x2



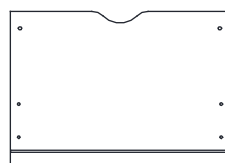
⑪ x2



⑧ x1



⑬ x1



⑭ x1



⑮ x1

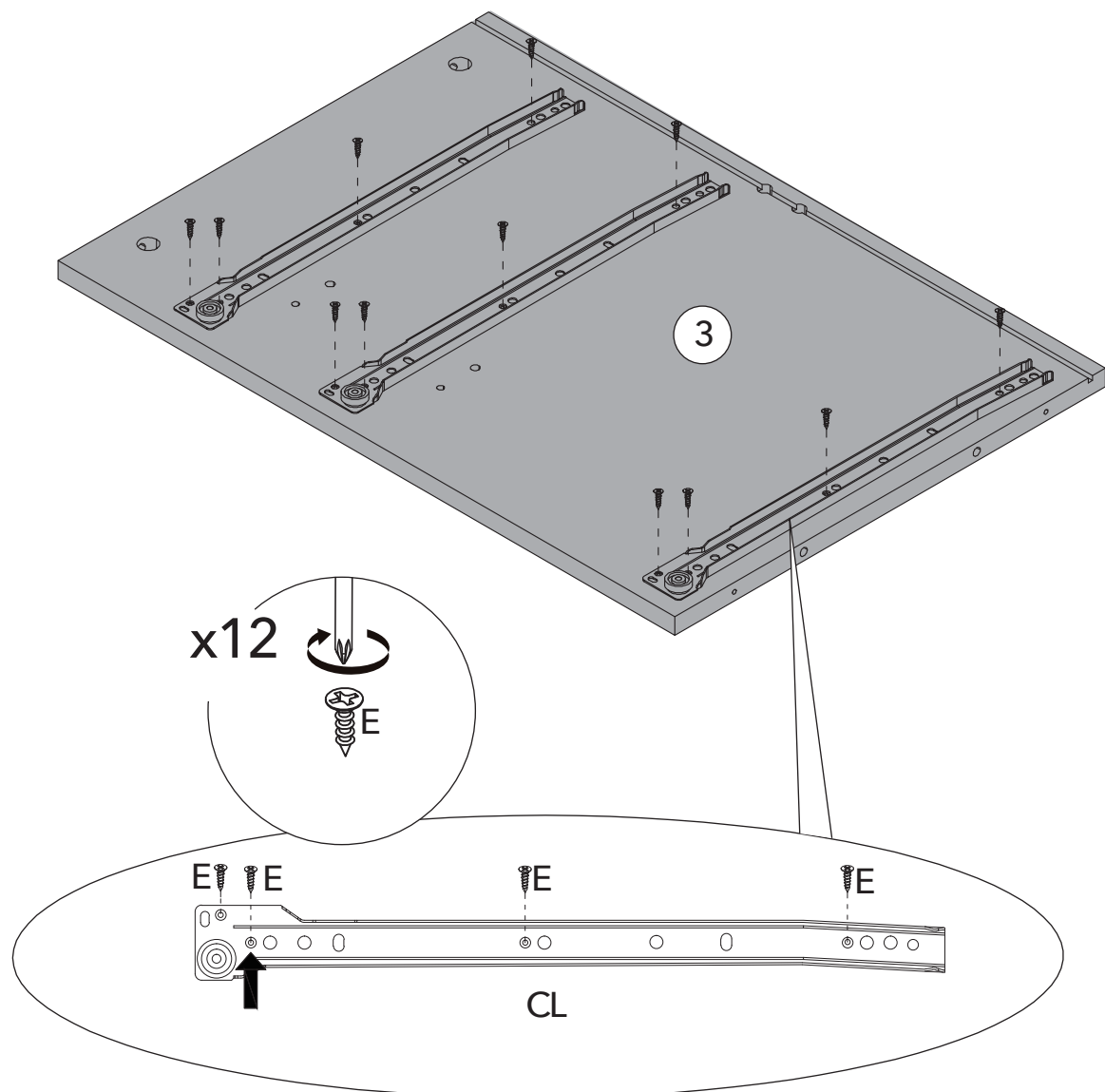


⑯ x1

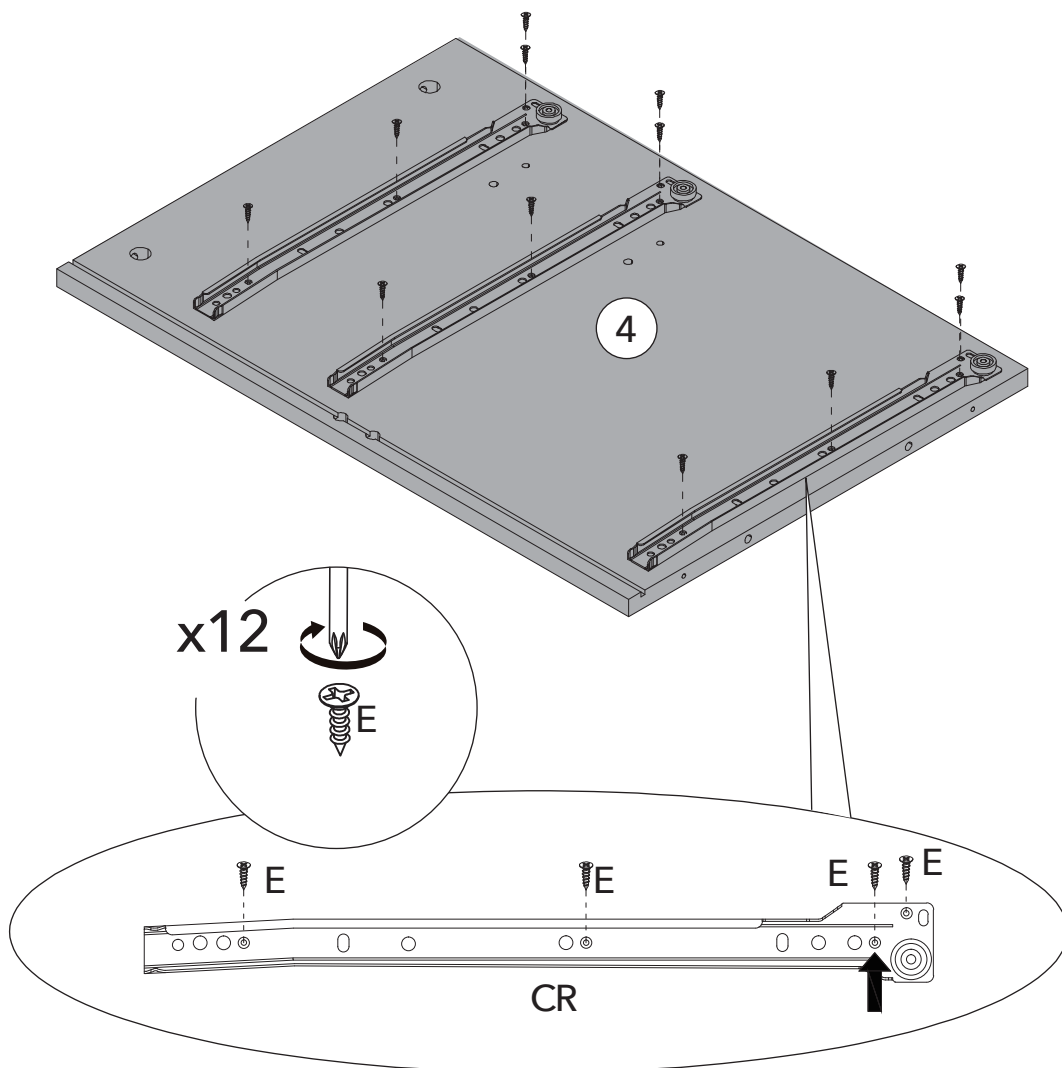


⑱ x2

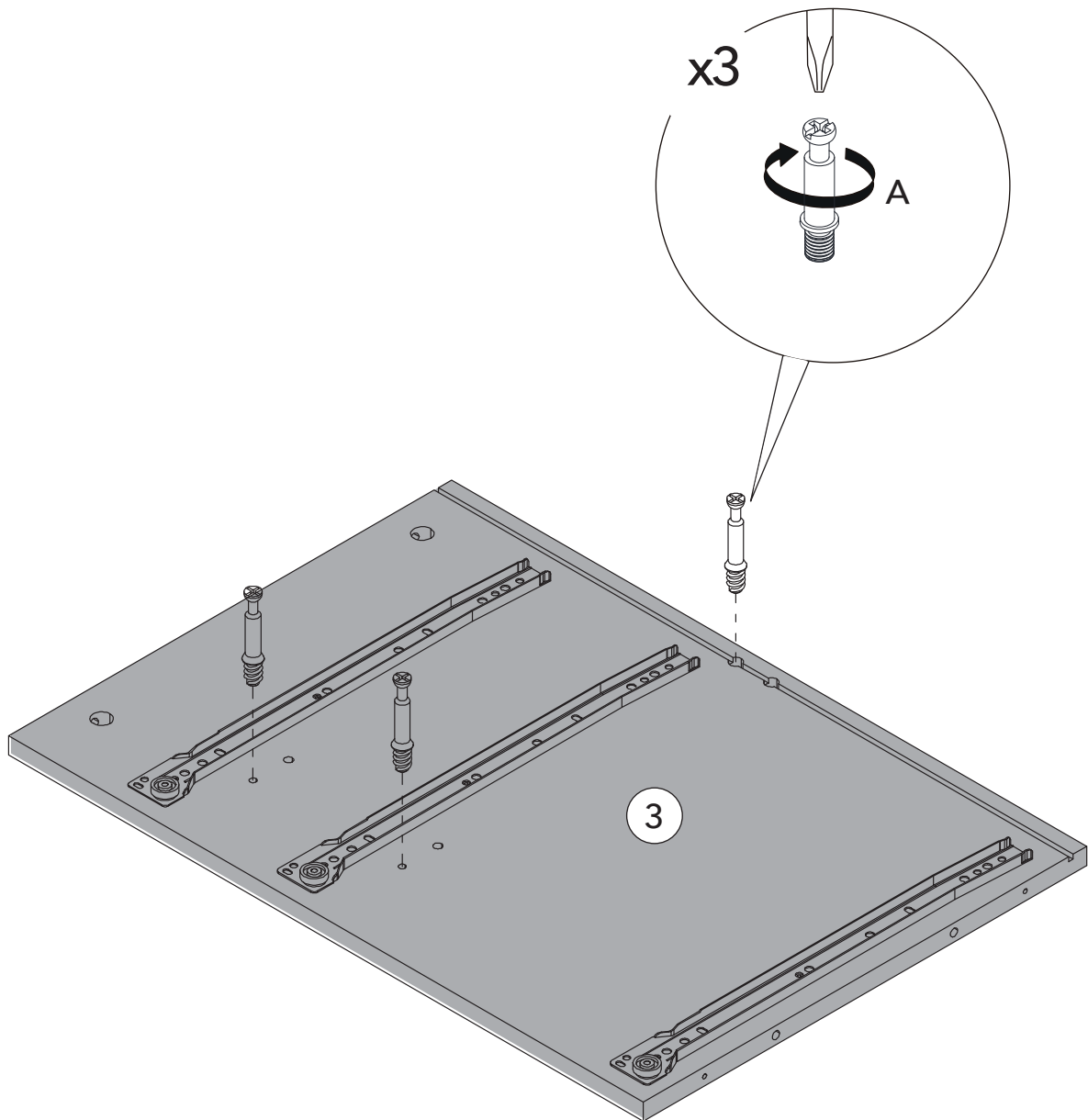
PASO 1



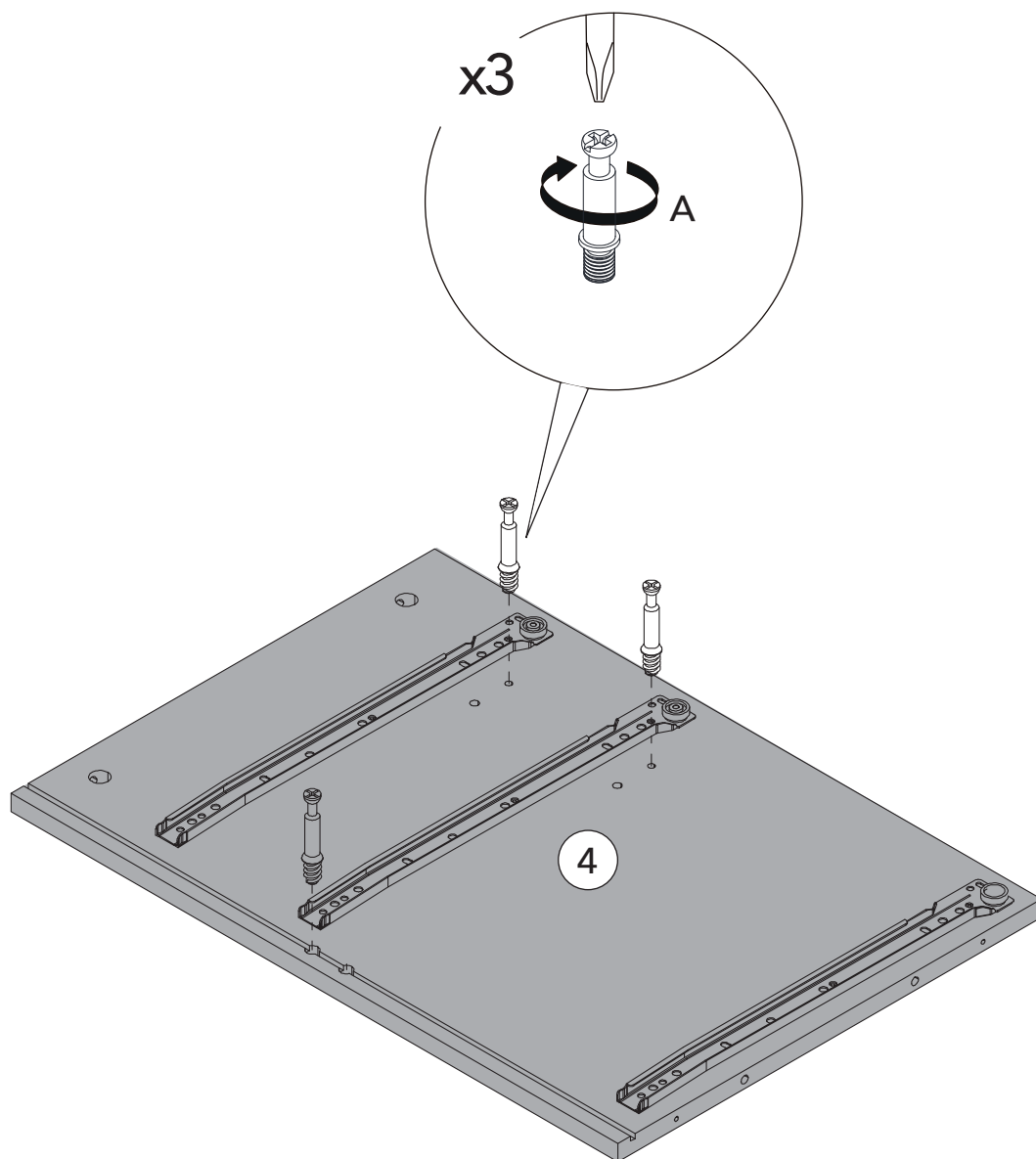
PASO 2



PASO 3

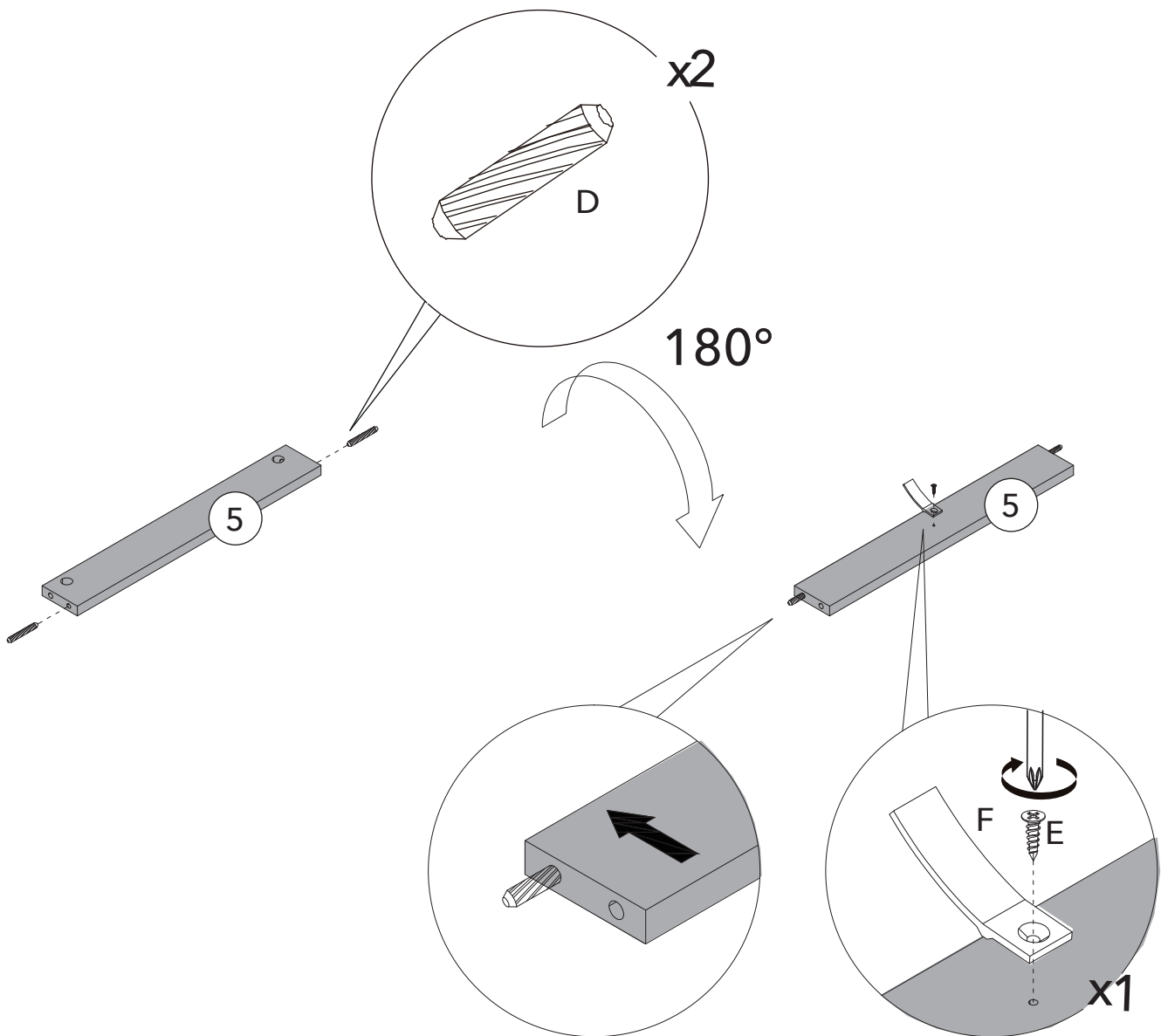


PASO 4

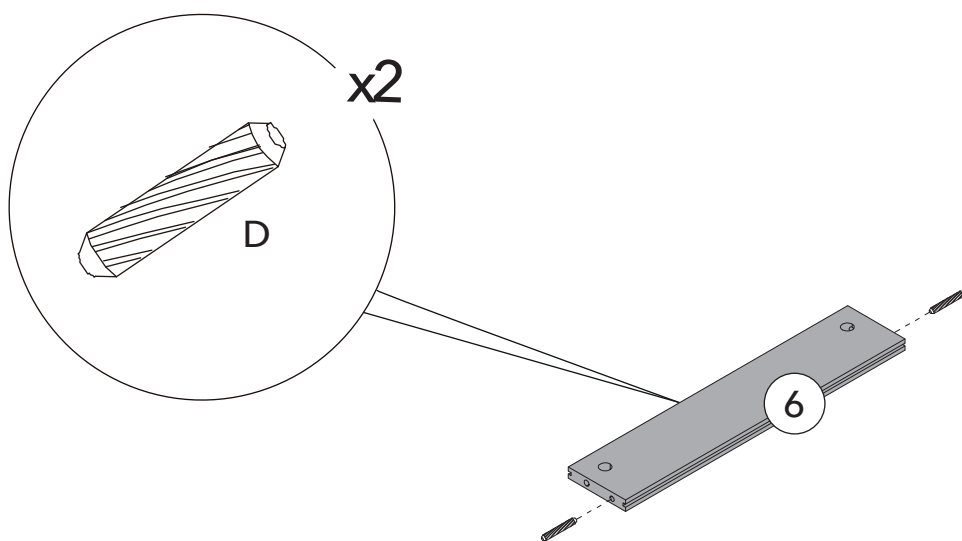


PASO 5

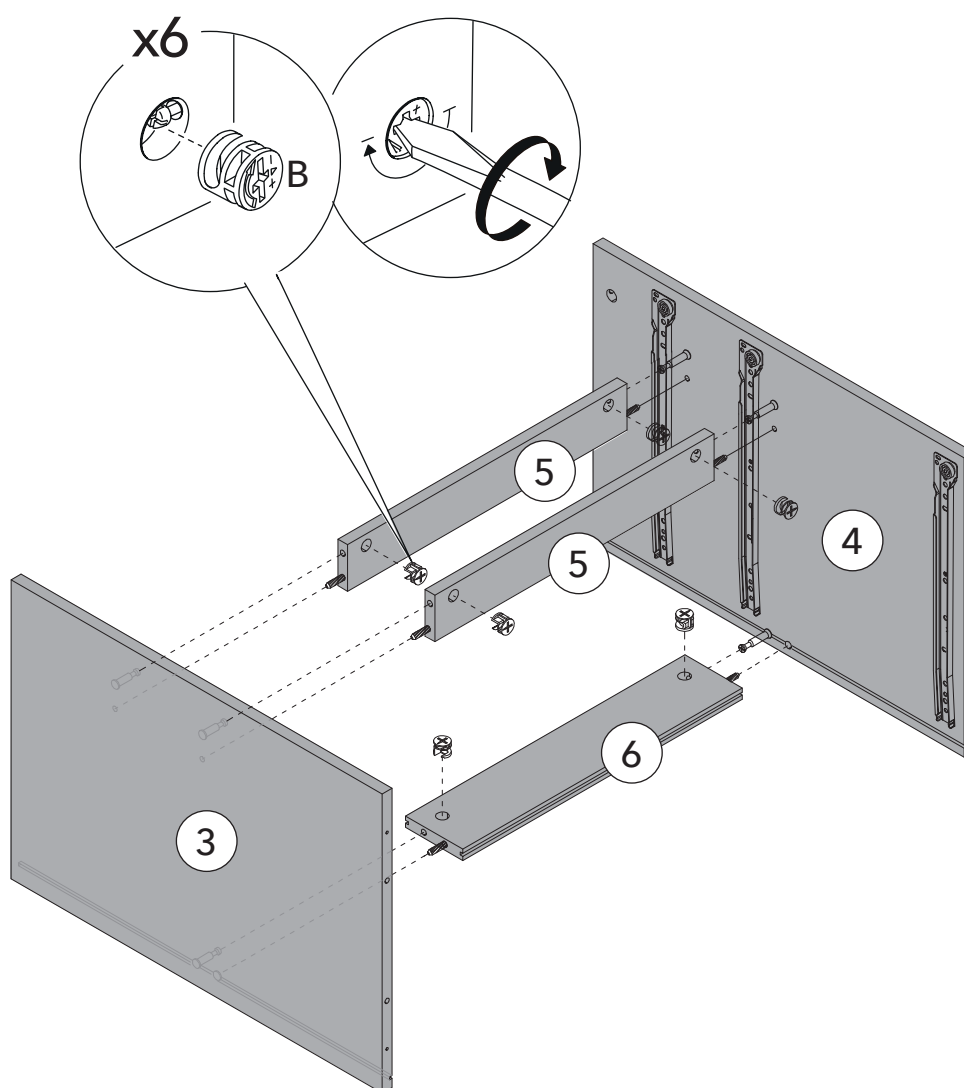
REPITA ESTE PASO DOS VECES CON LA PIEZA 5



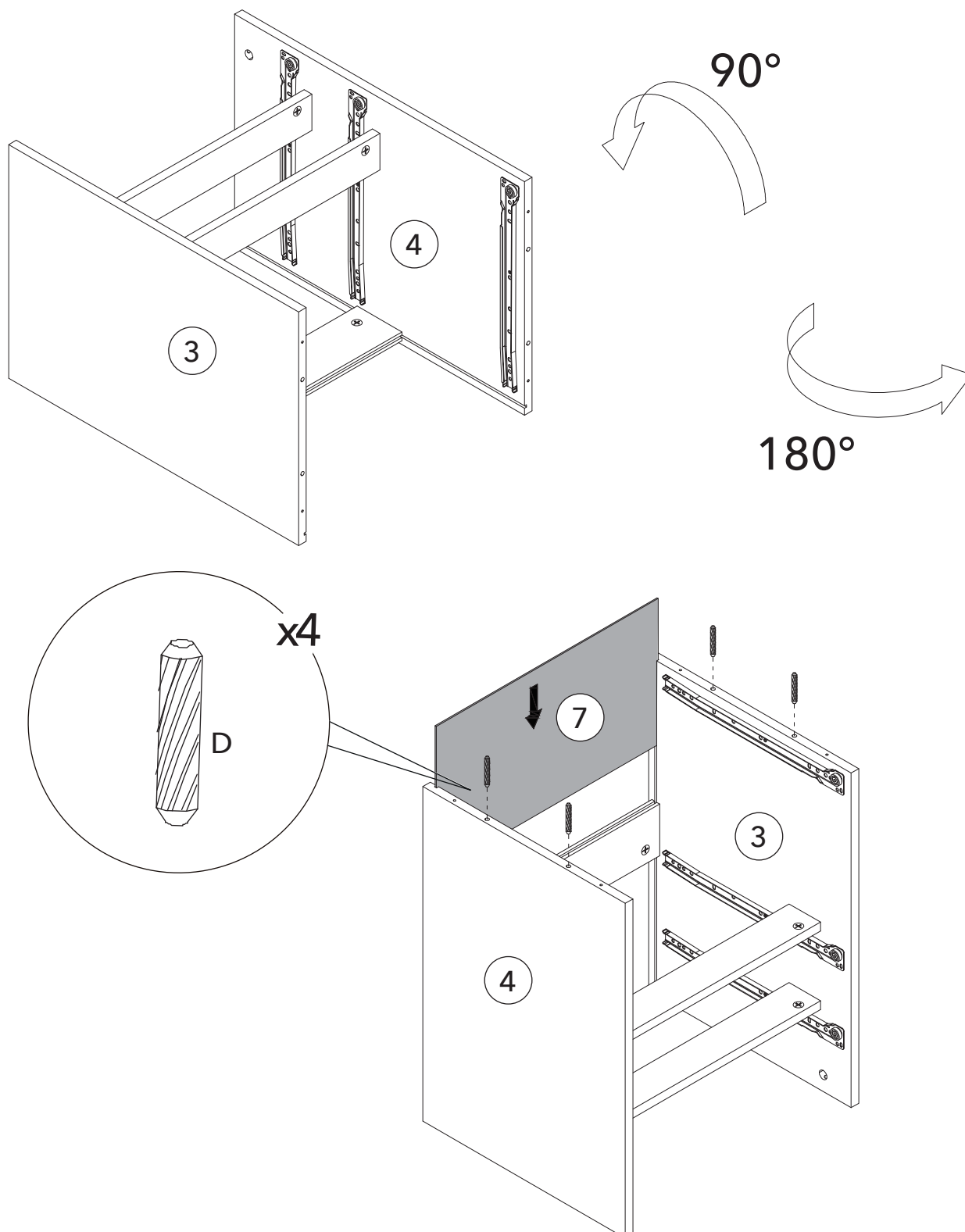
PASO 6



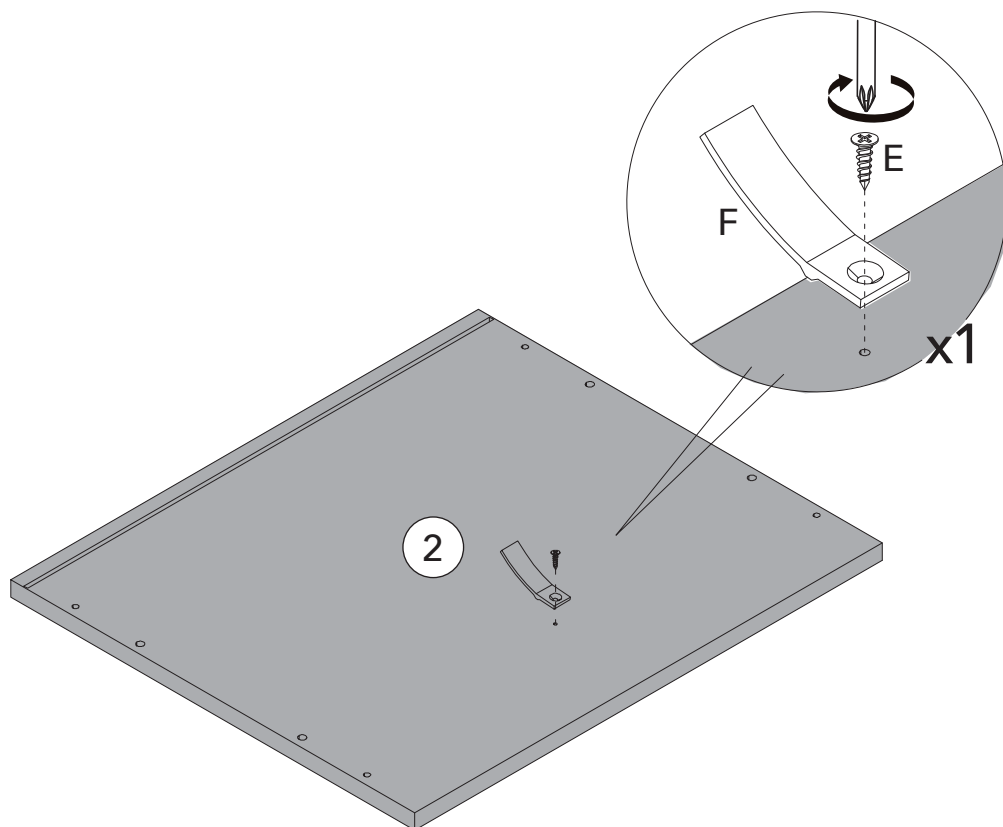
PASO 7



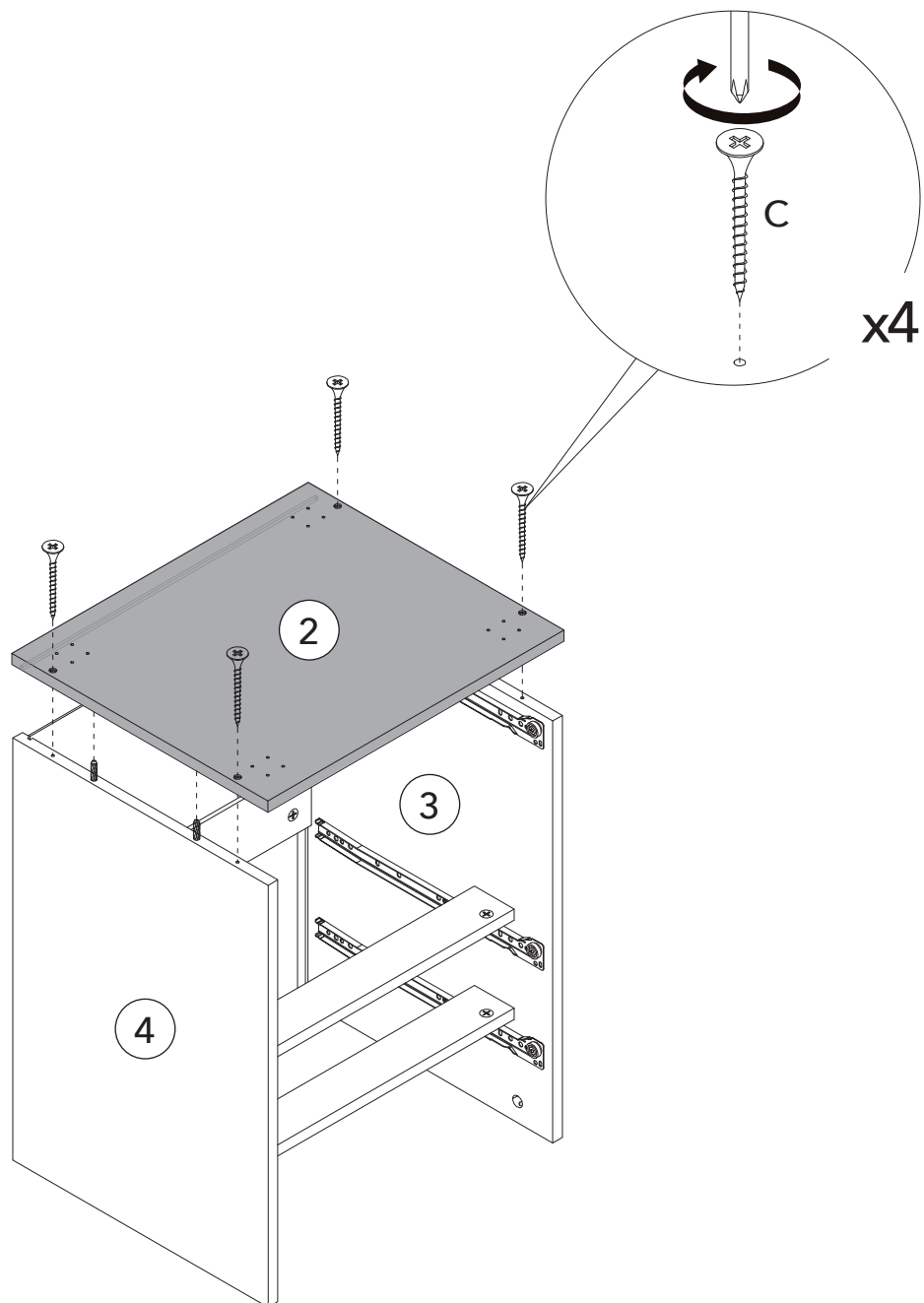
PASO 8



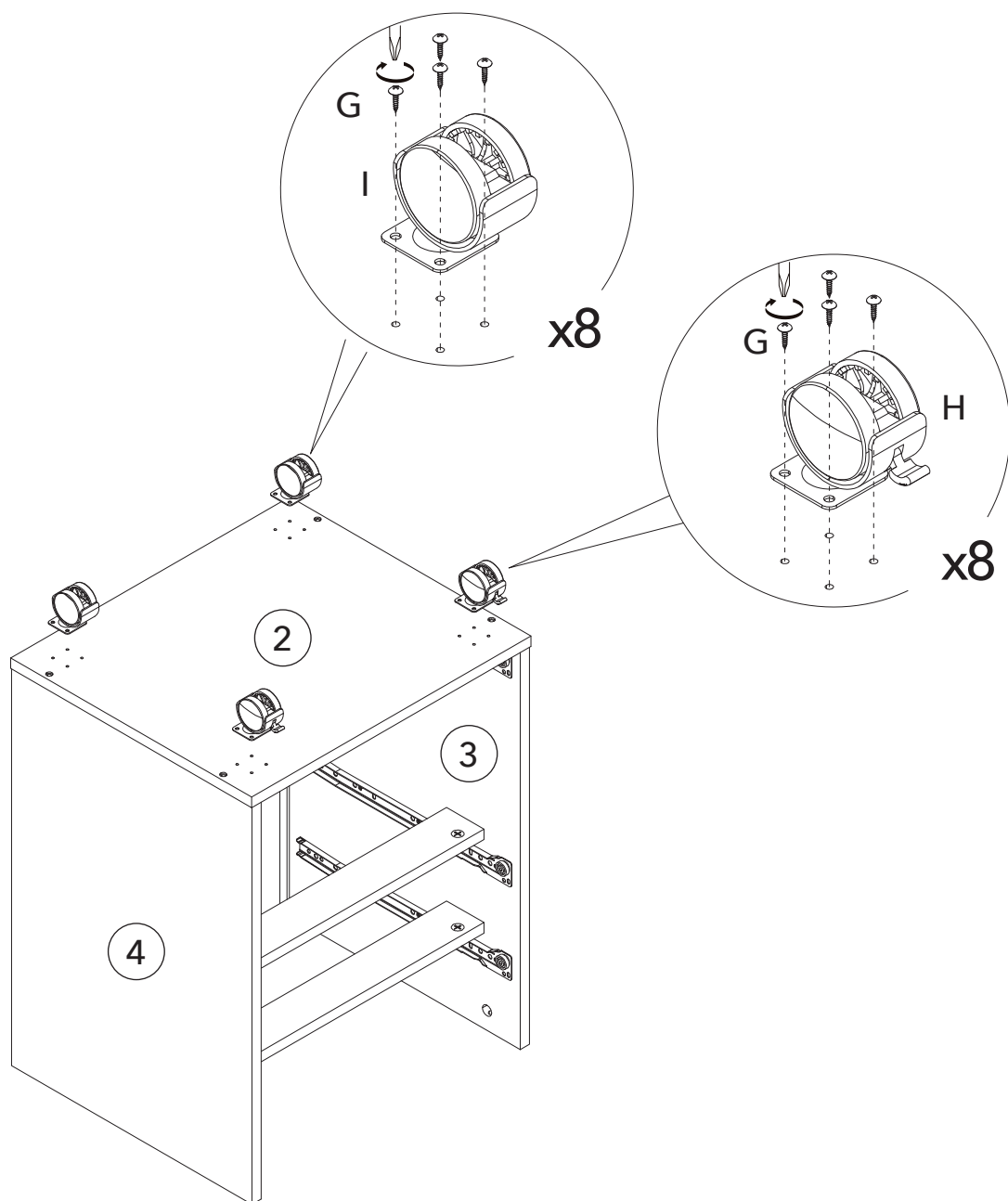
PASO 9



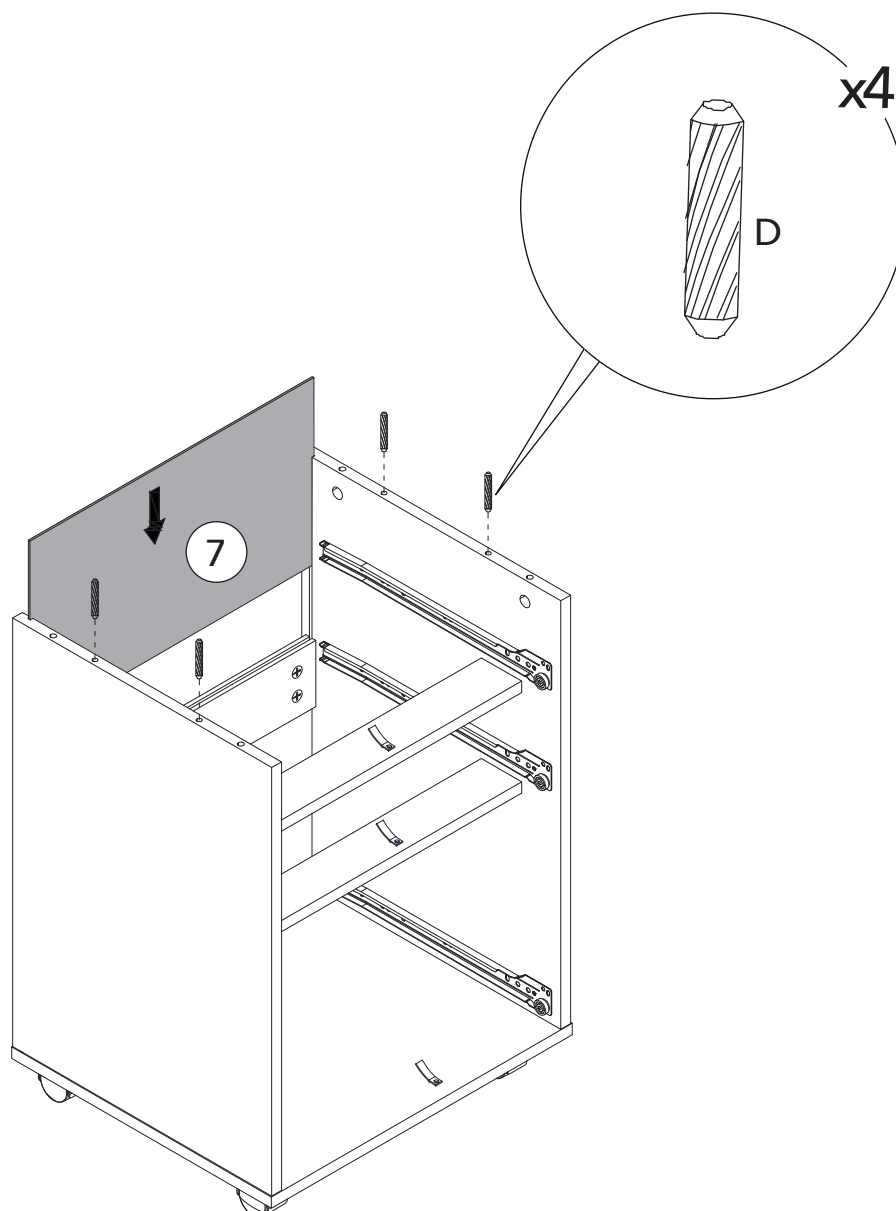
PASO 10



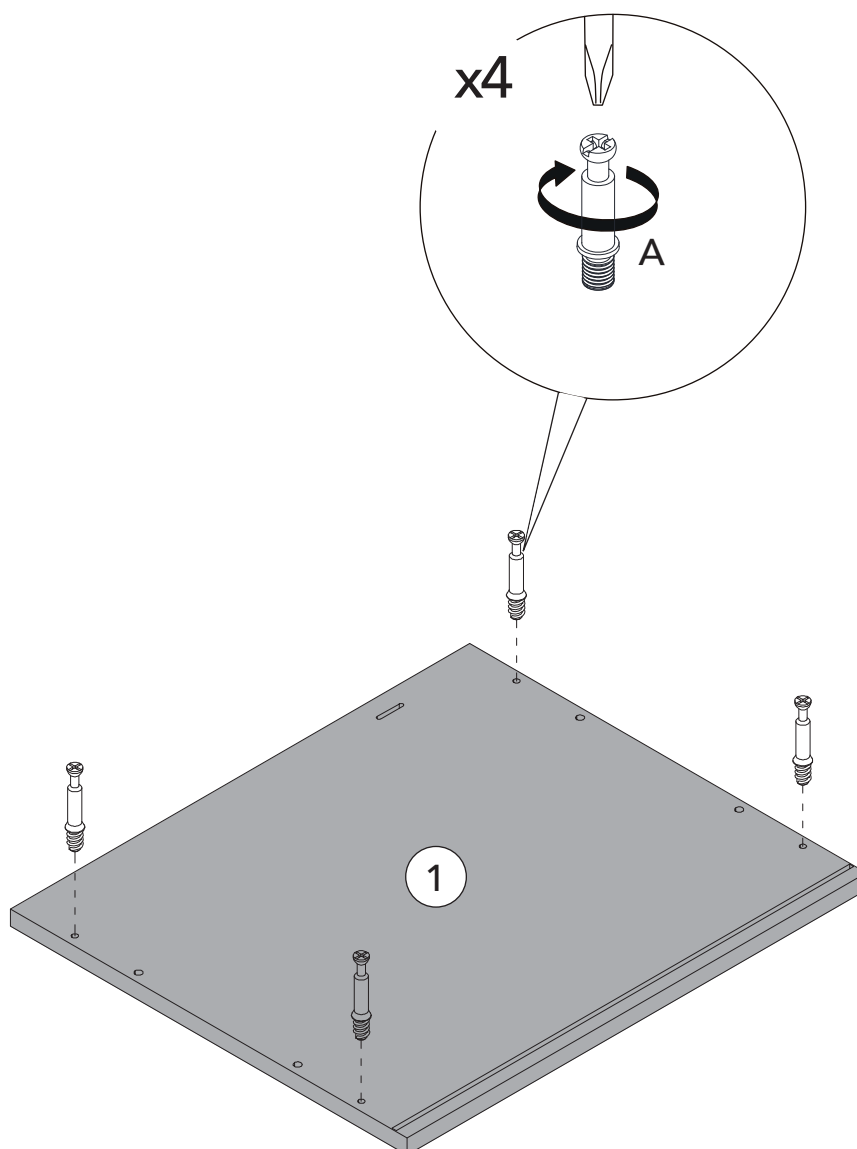
PASO 11



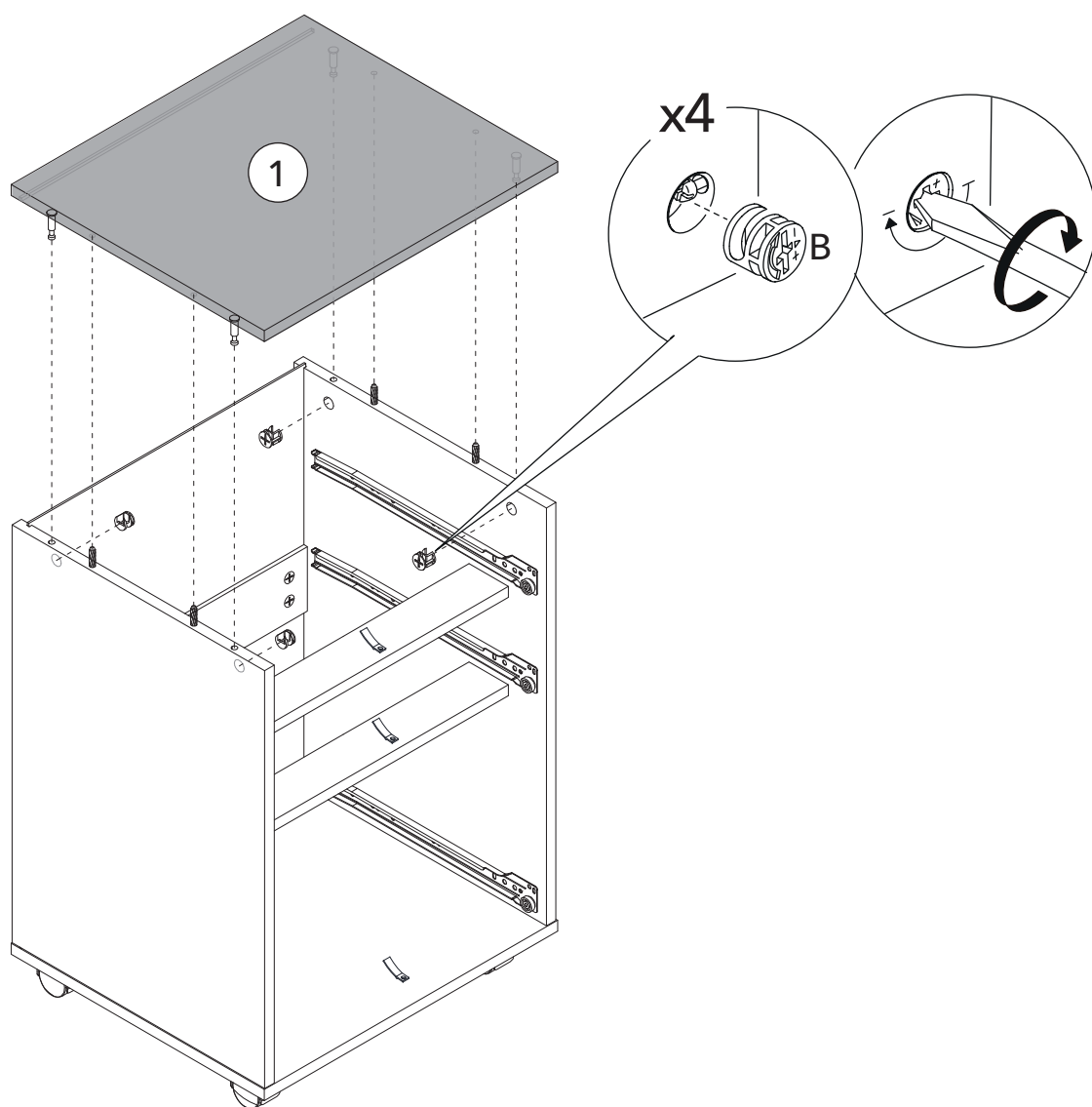
PASO 12



PASO 13

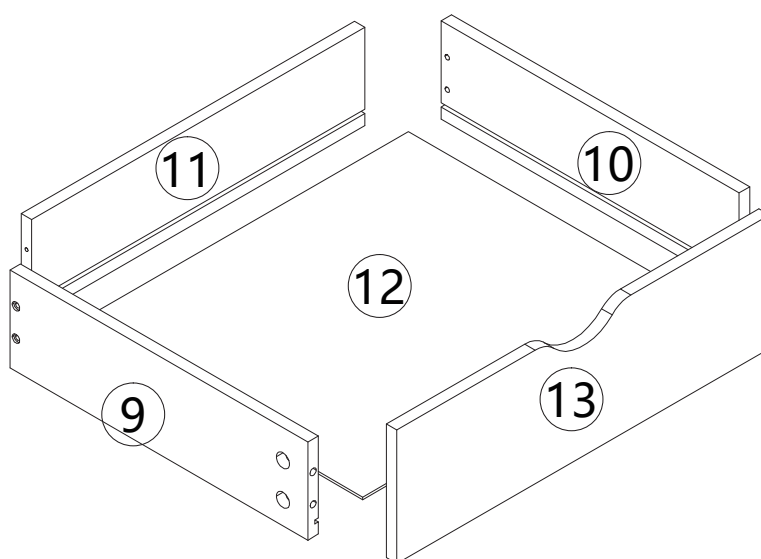
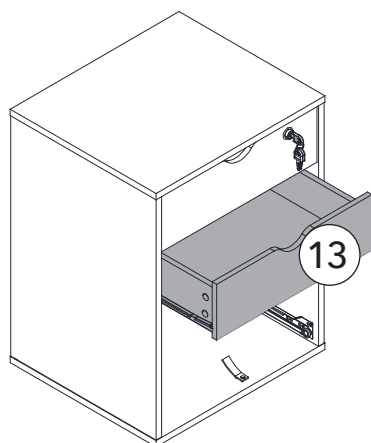
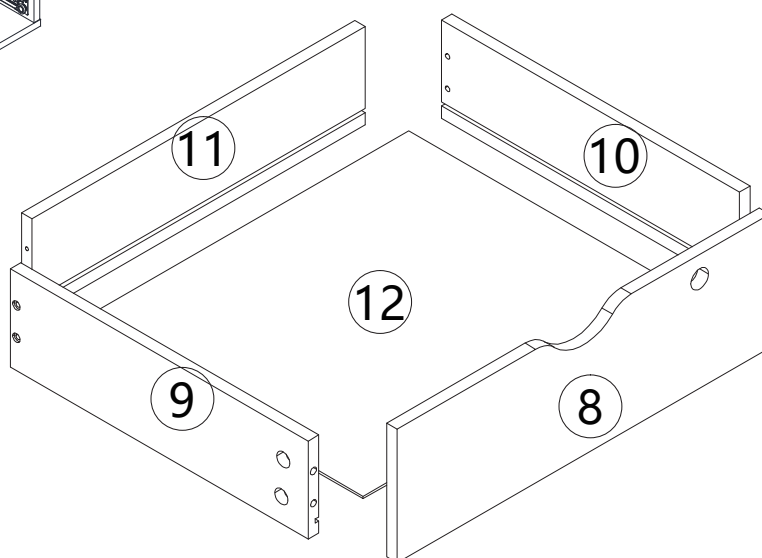
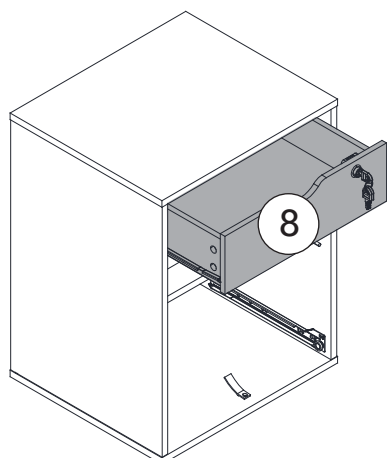


PASO 14



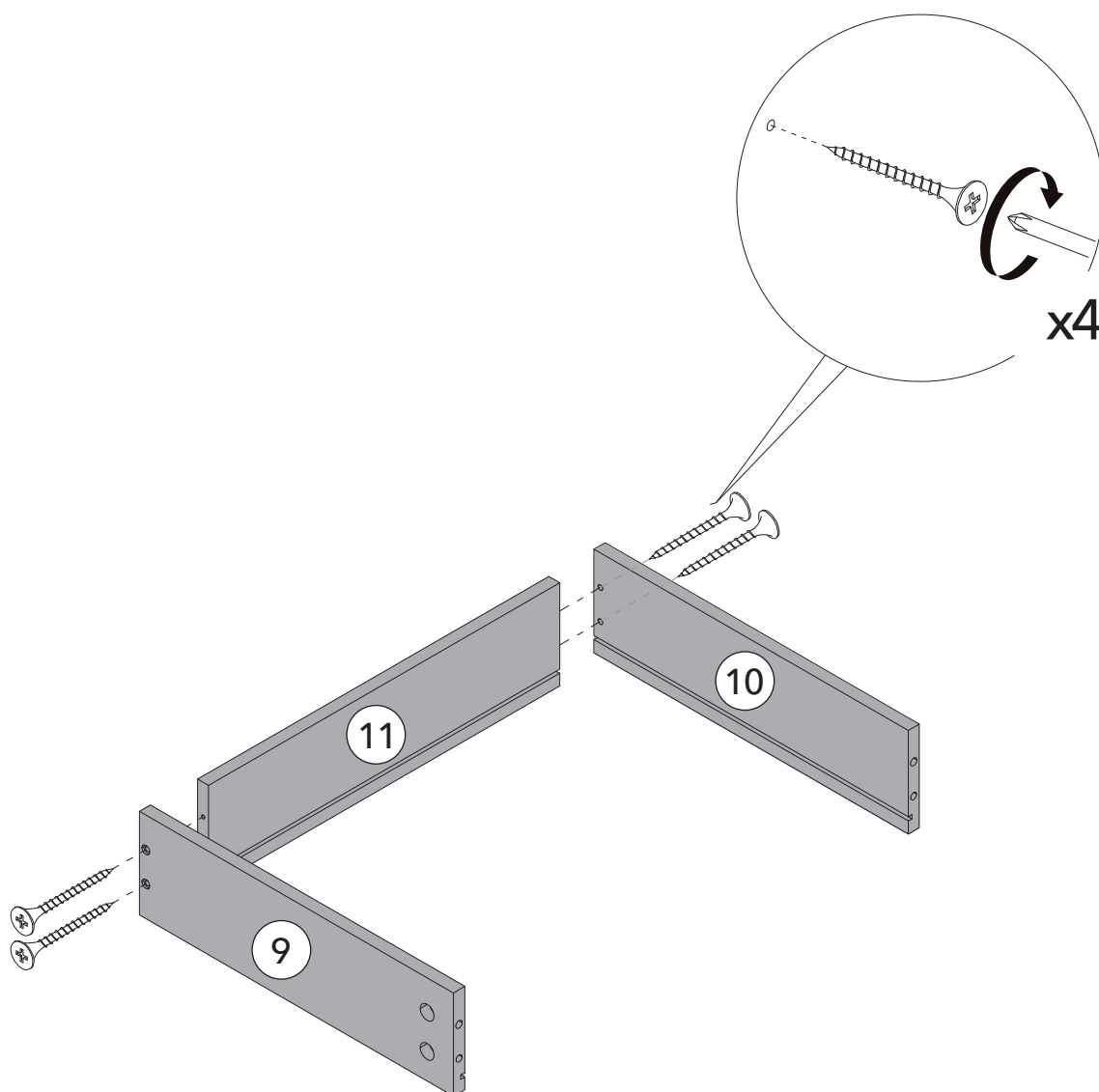
PASO 15

ARMADO DE CAJONES



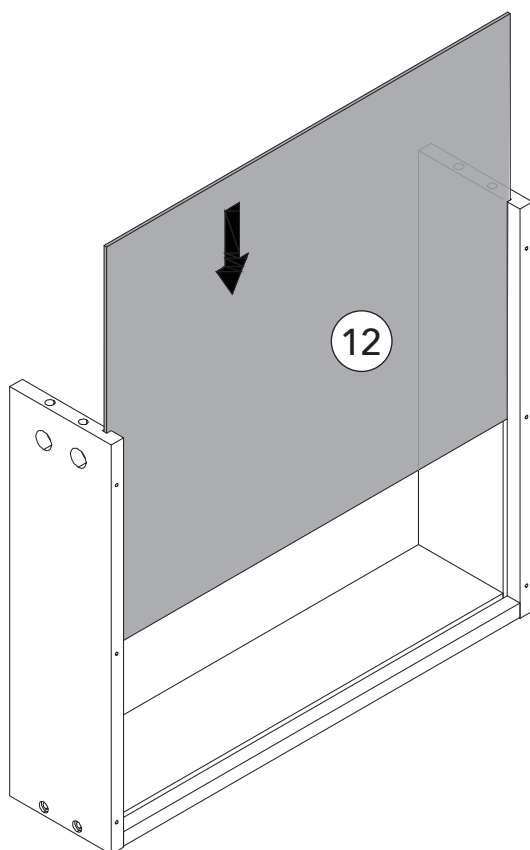
PASO 16

HACER LO MISMO PARA LOS 2 CAJONES

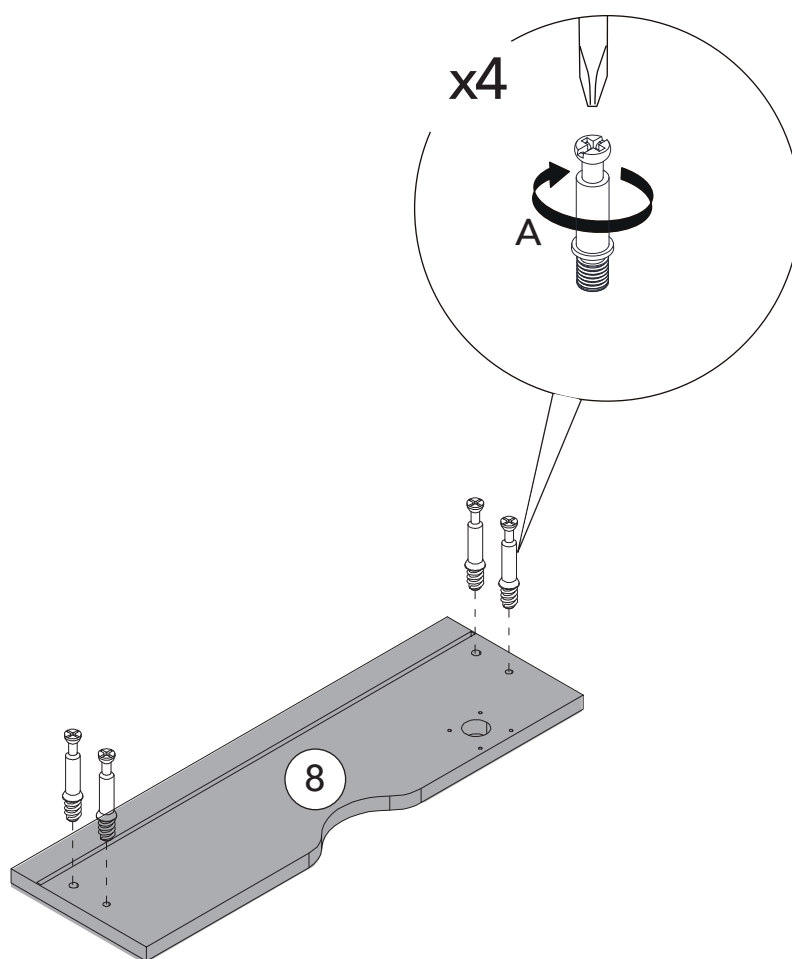
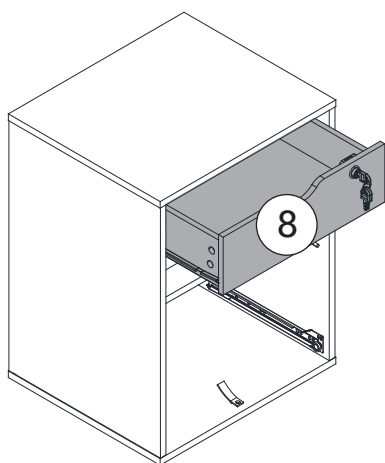


PASO 17

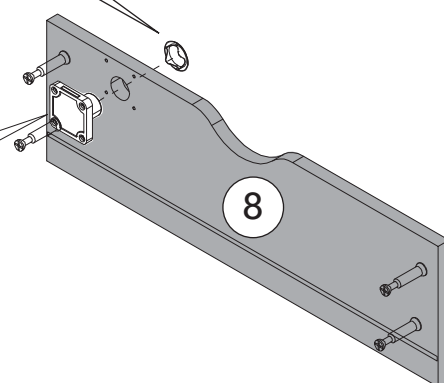
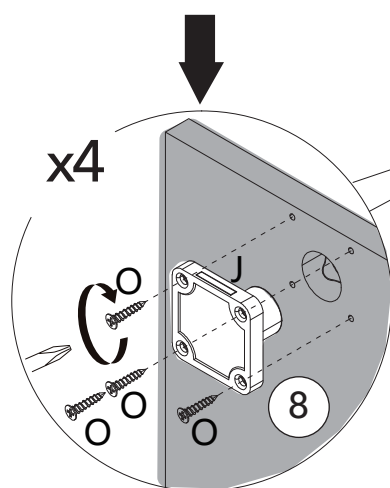
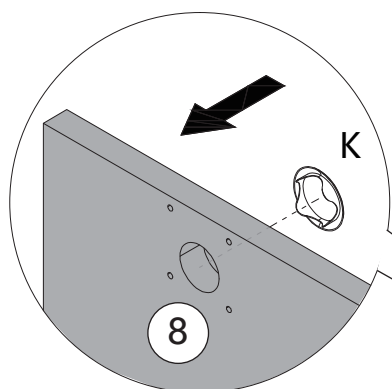
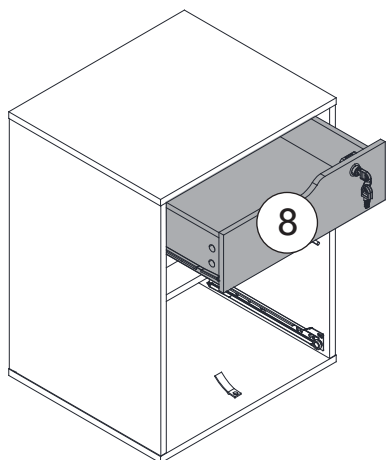
HACER LO MISMO PARA LOS 2 CAJONES



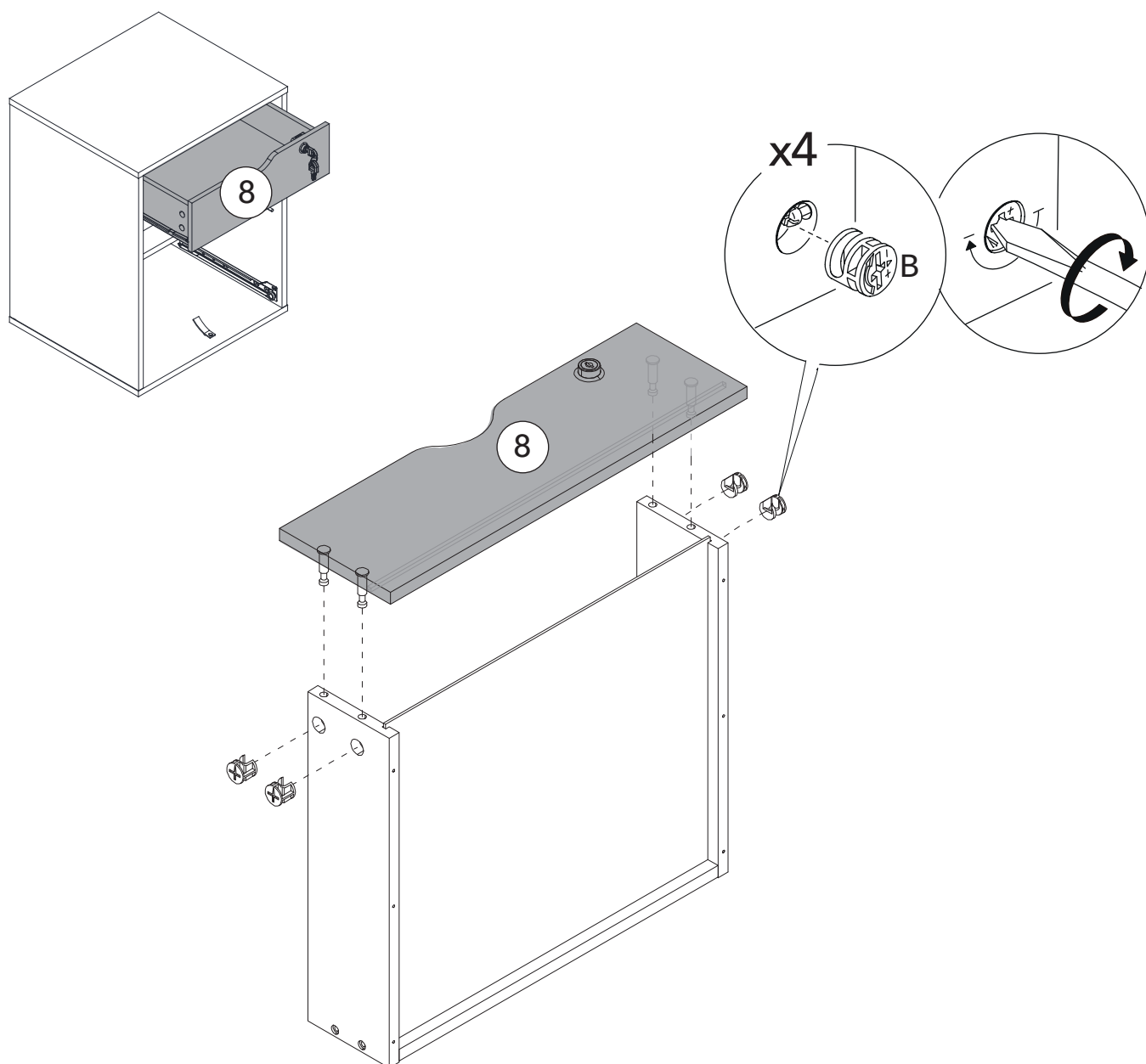
PASO 18



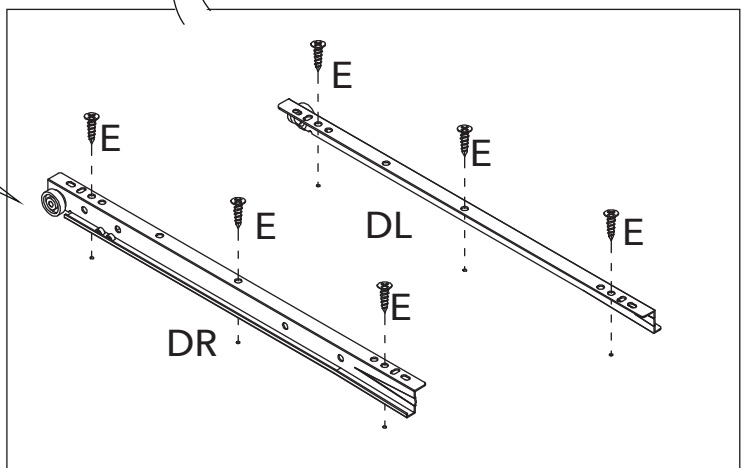
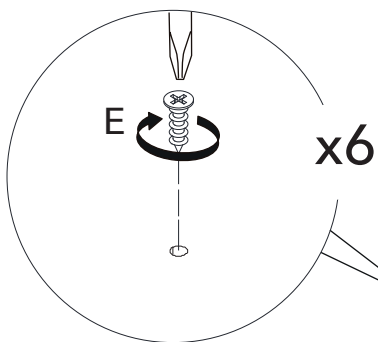
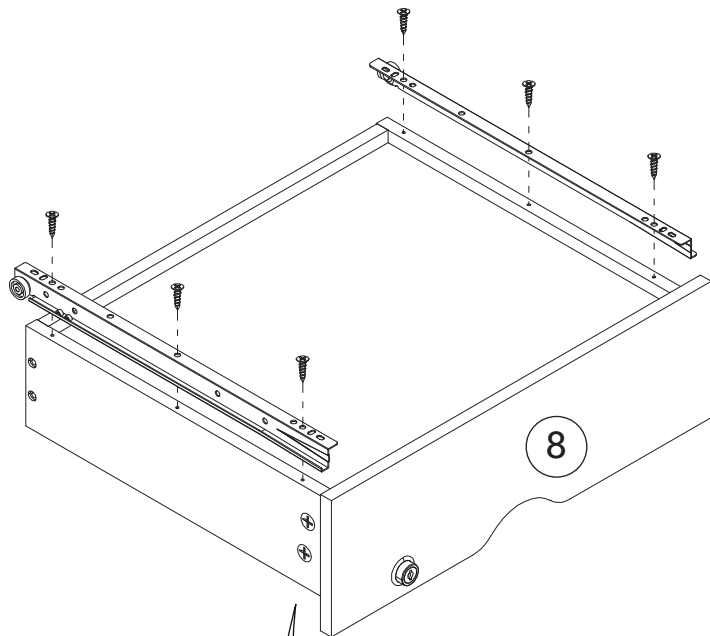
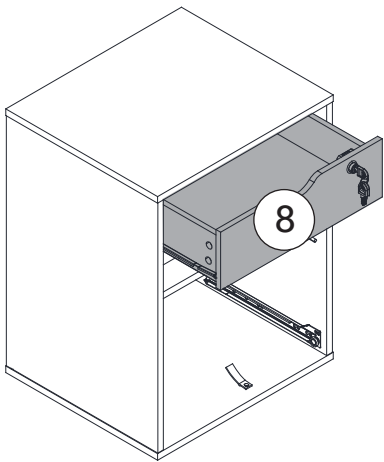
PASO 19



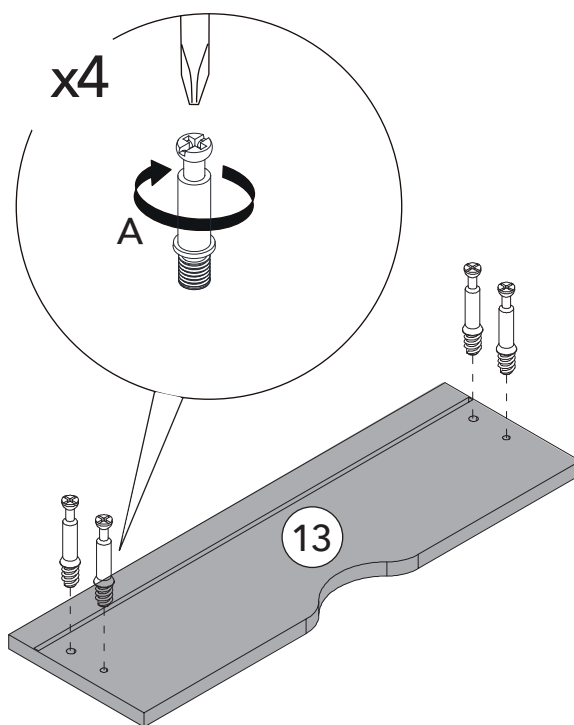
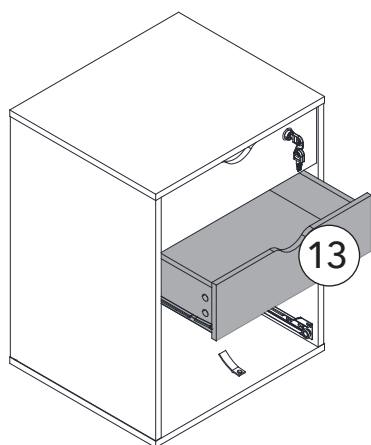
PASO 20



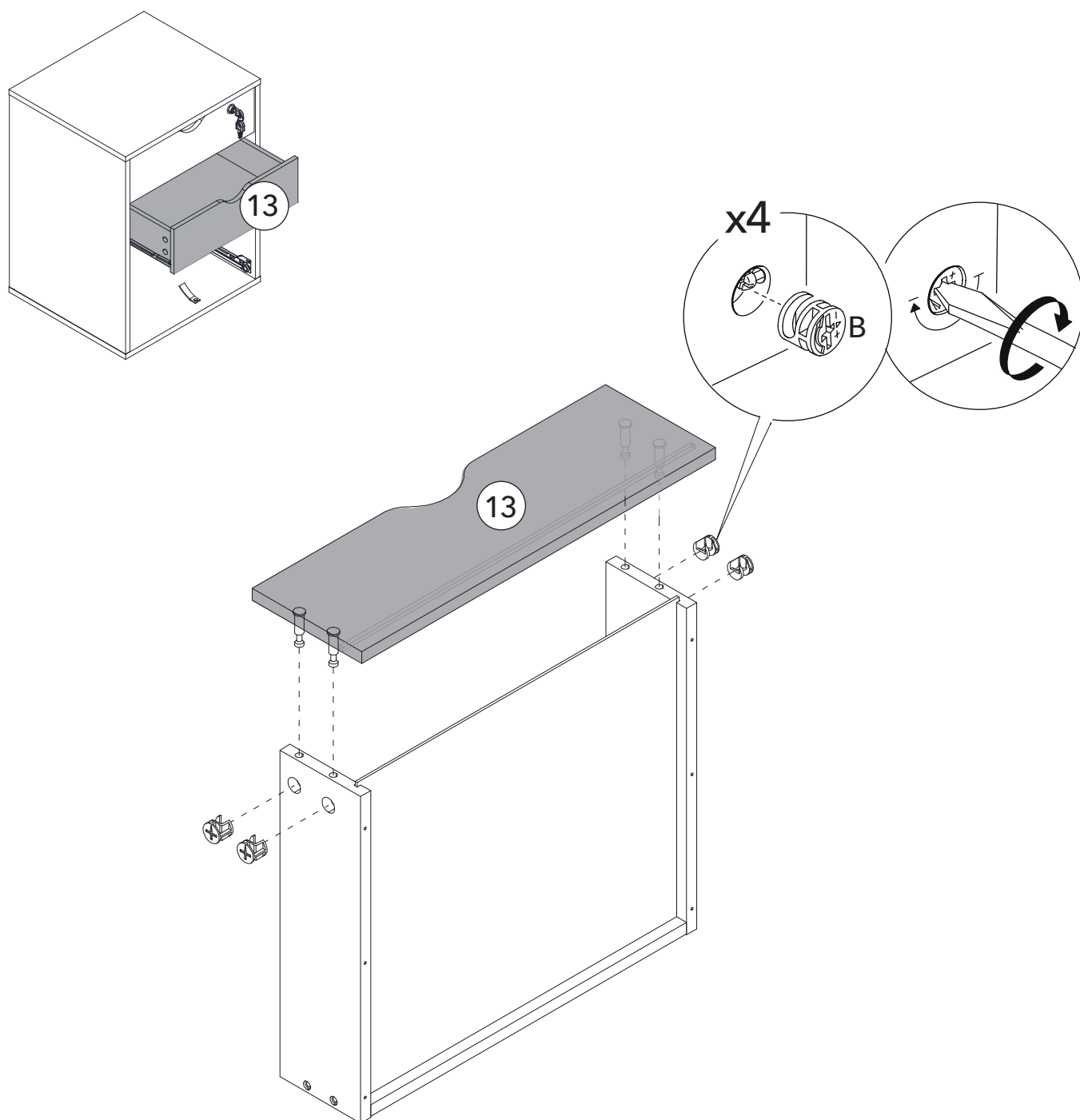
PASO 21



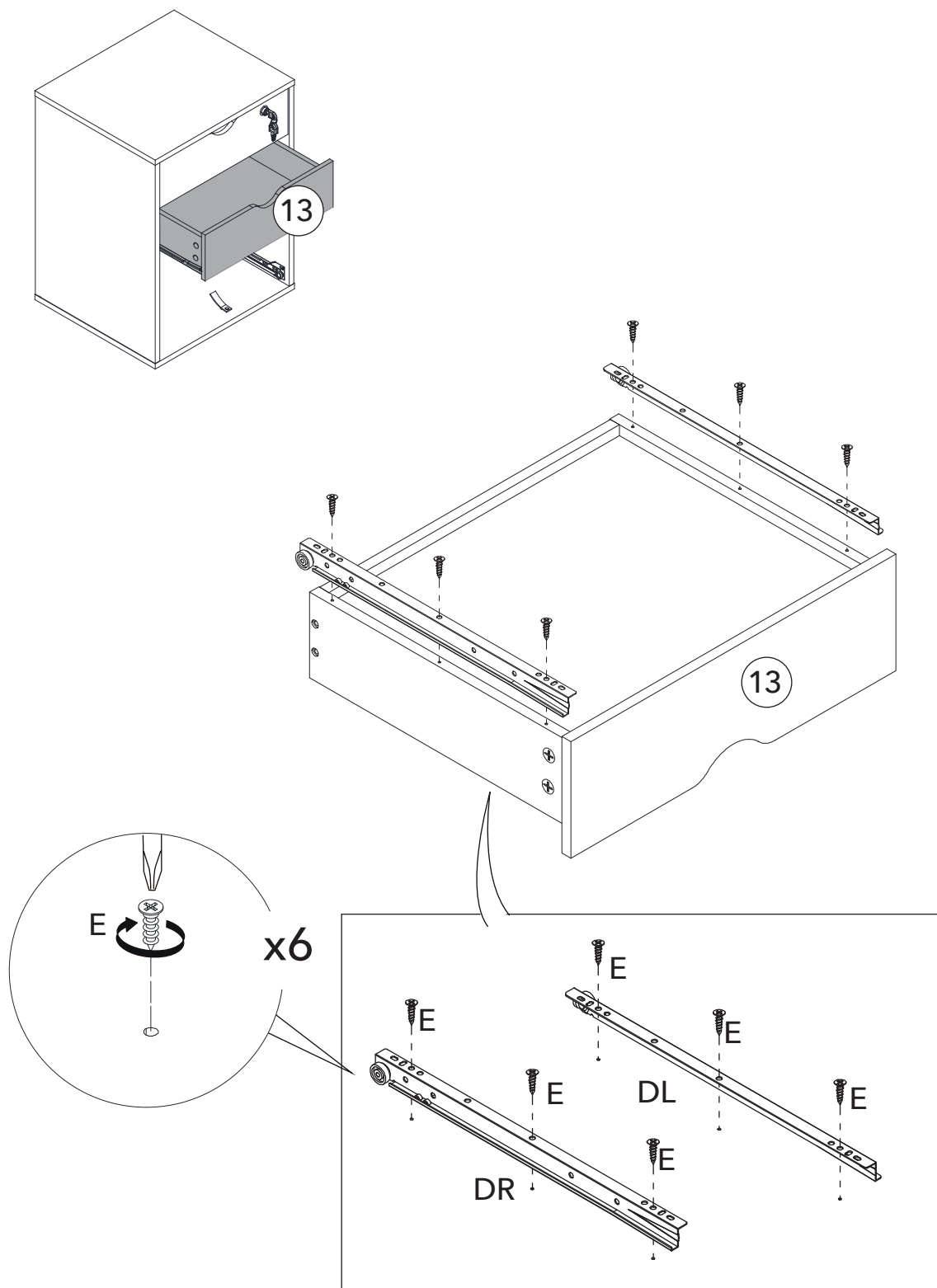
PASO 22



PASO 23

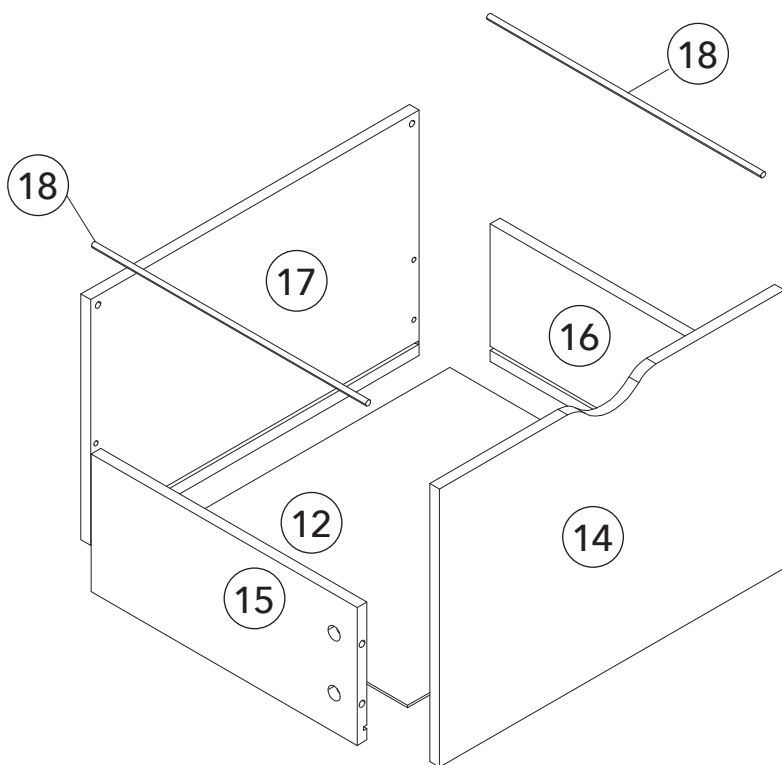
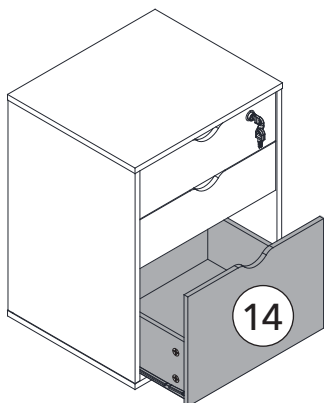


PASO 24

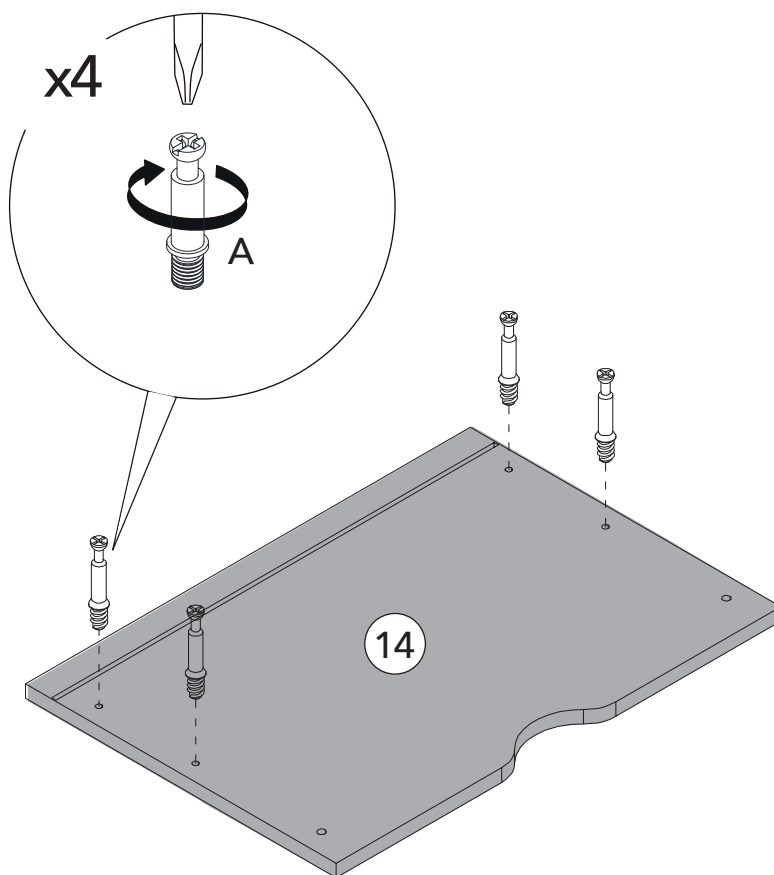
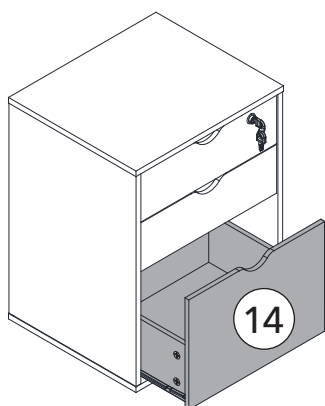


PASO 25

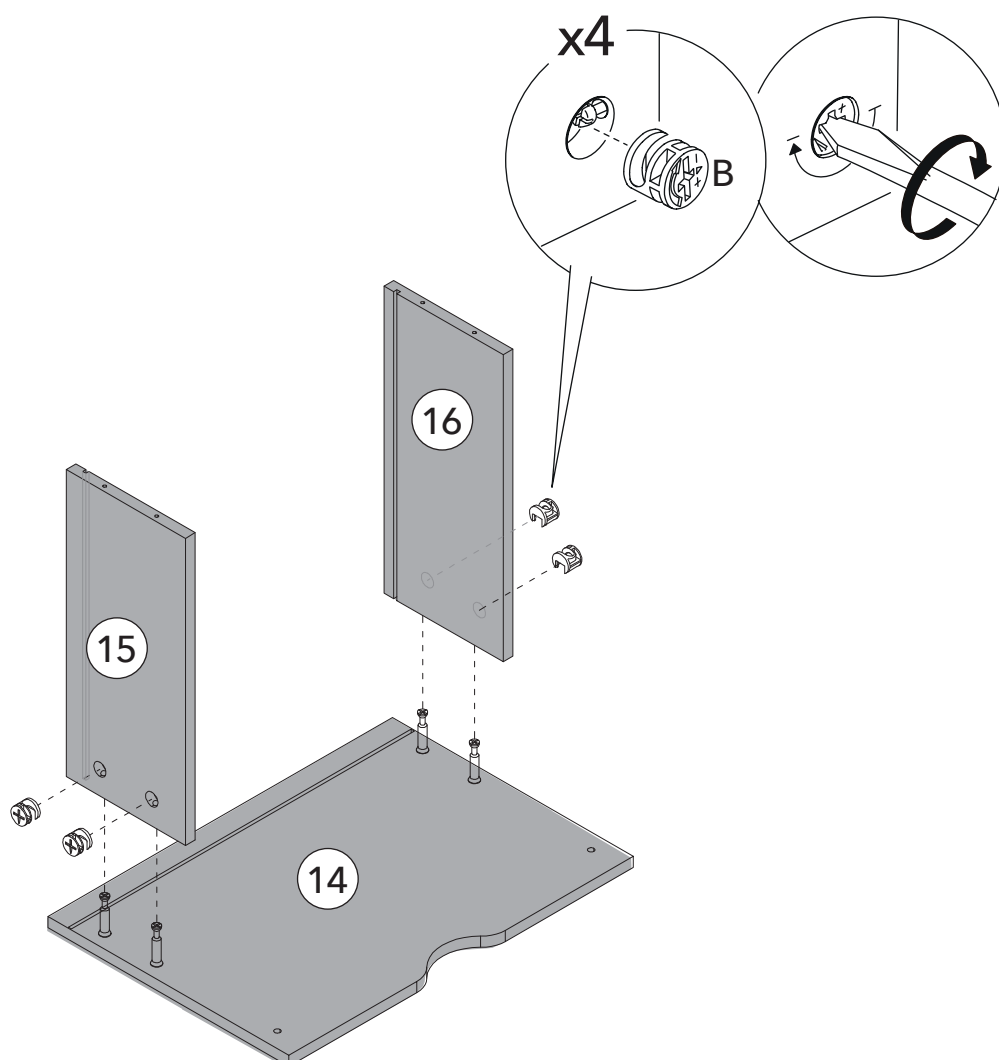
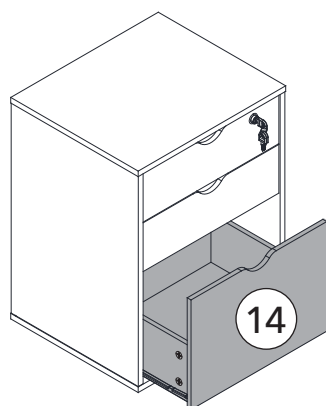
ARMADO DEL CAJON GRANDE



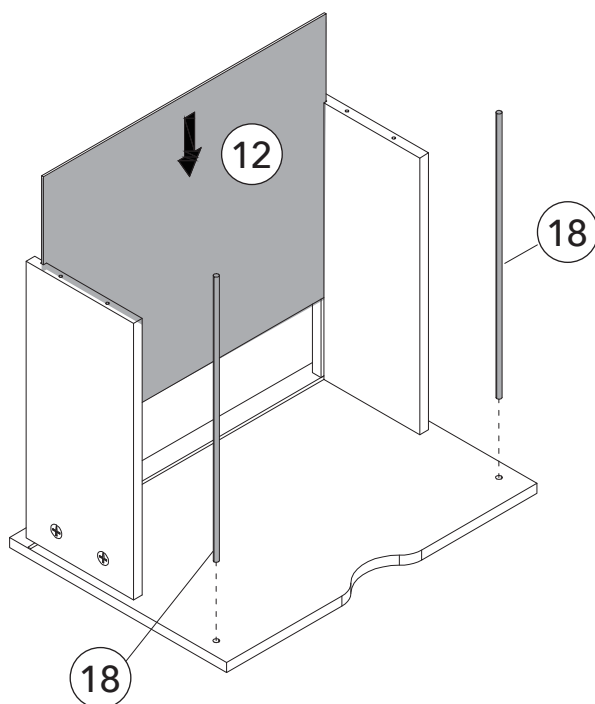
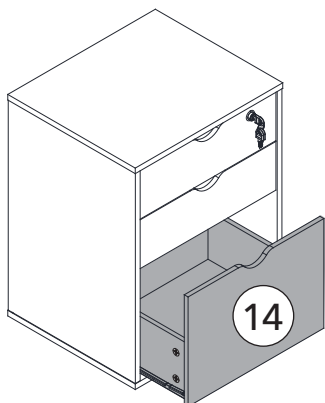
PASO 26



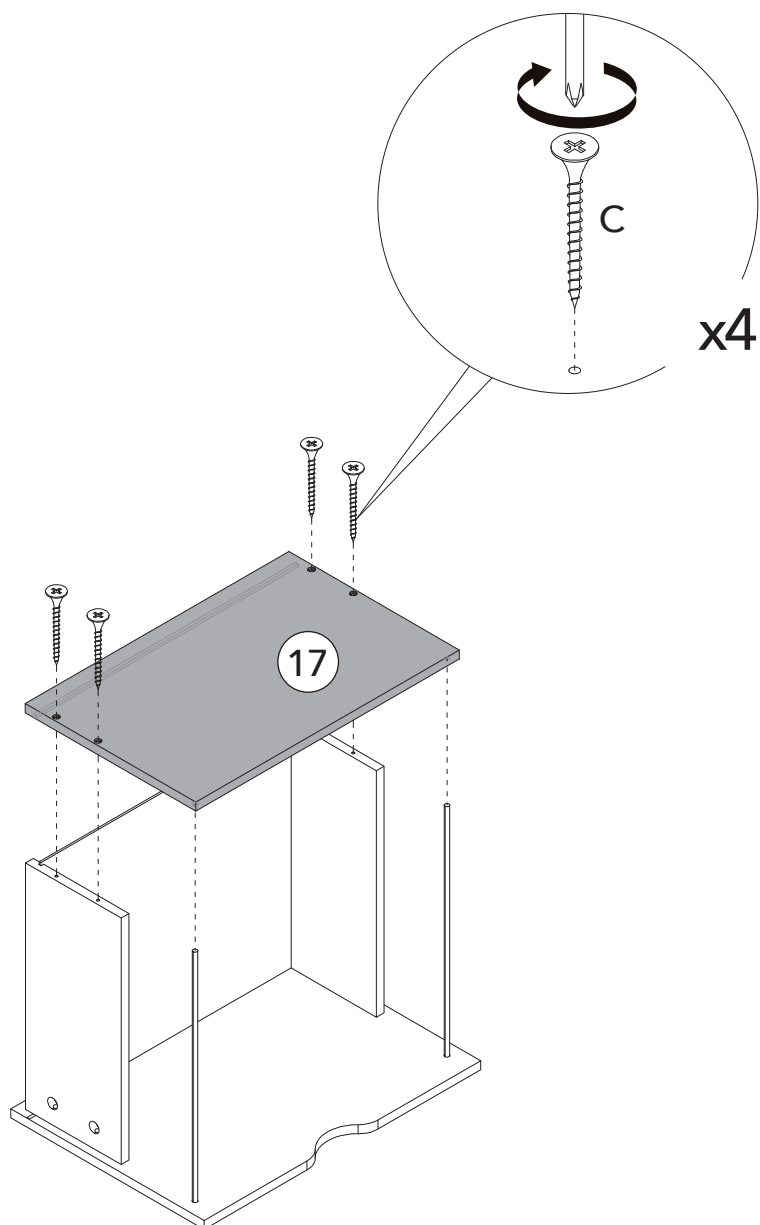
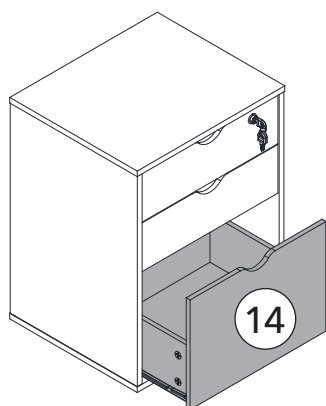
PASO 27



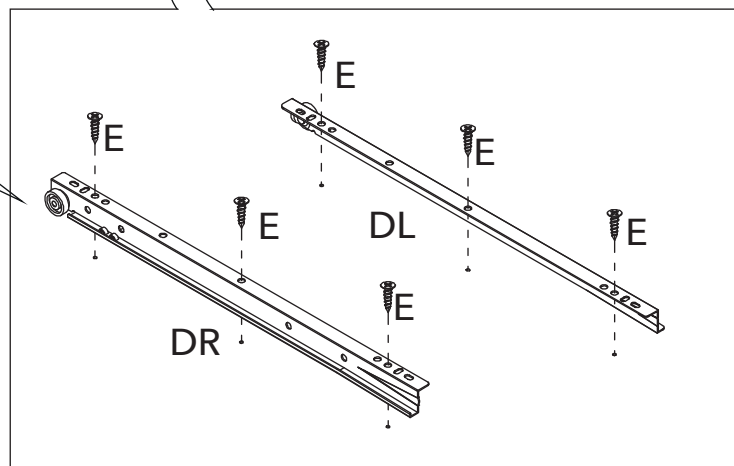
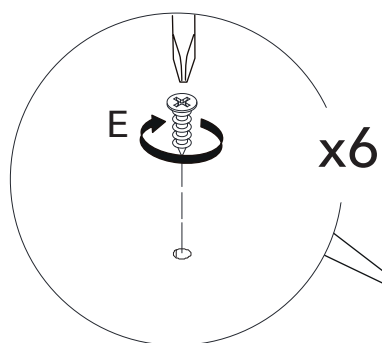
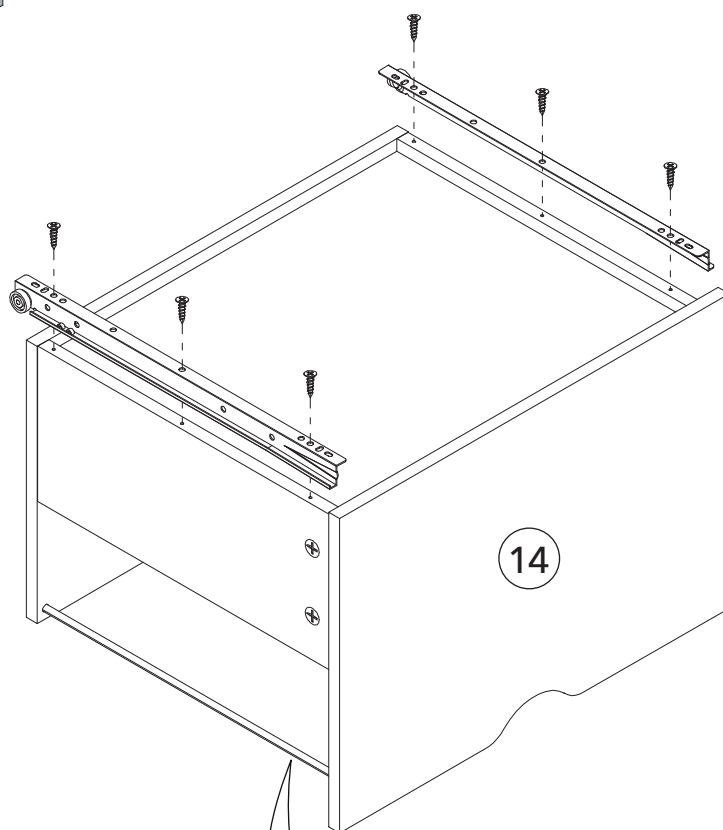
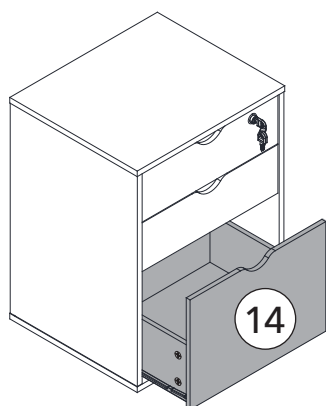
PASO 28



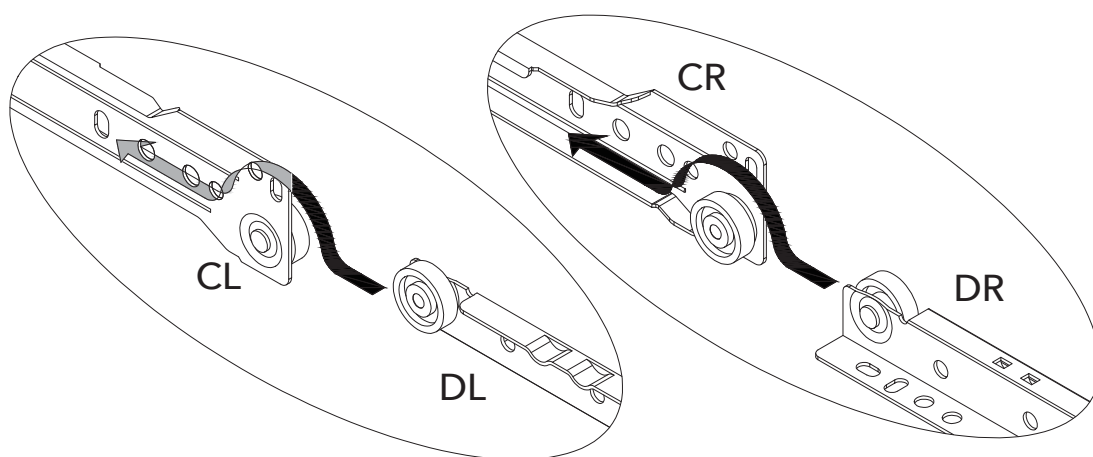
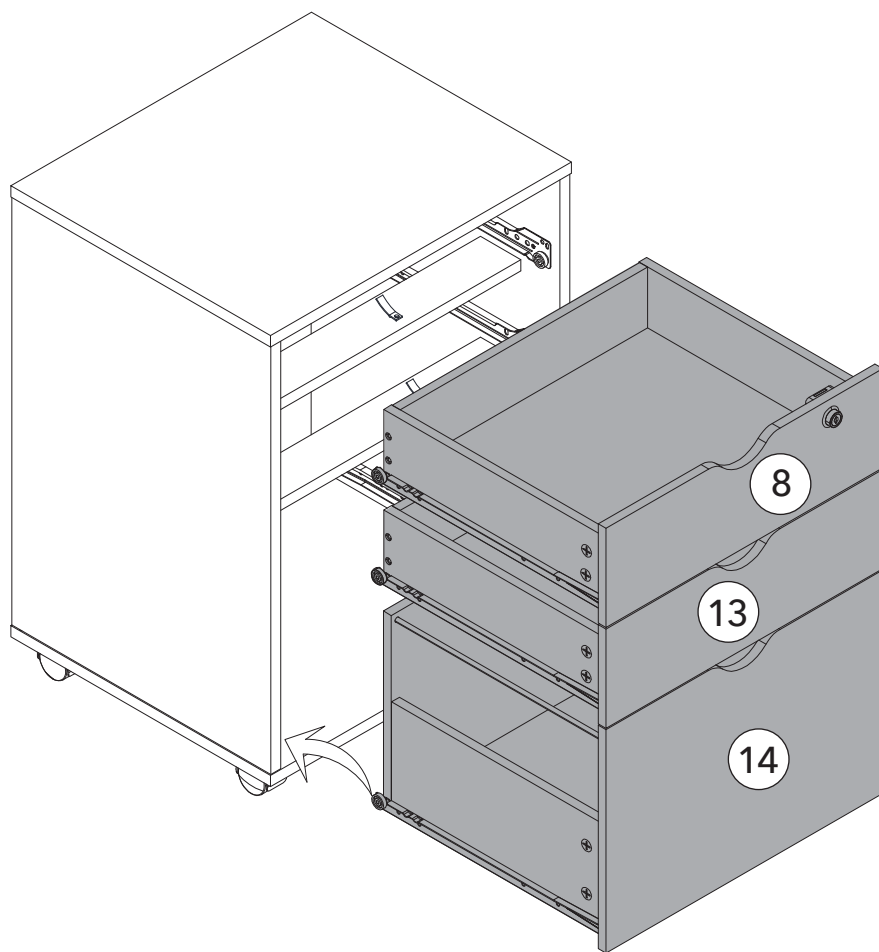
PASO 29



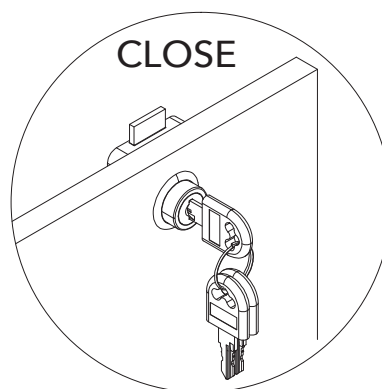
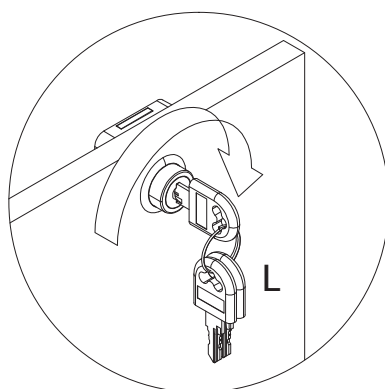
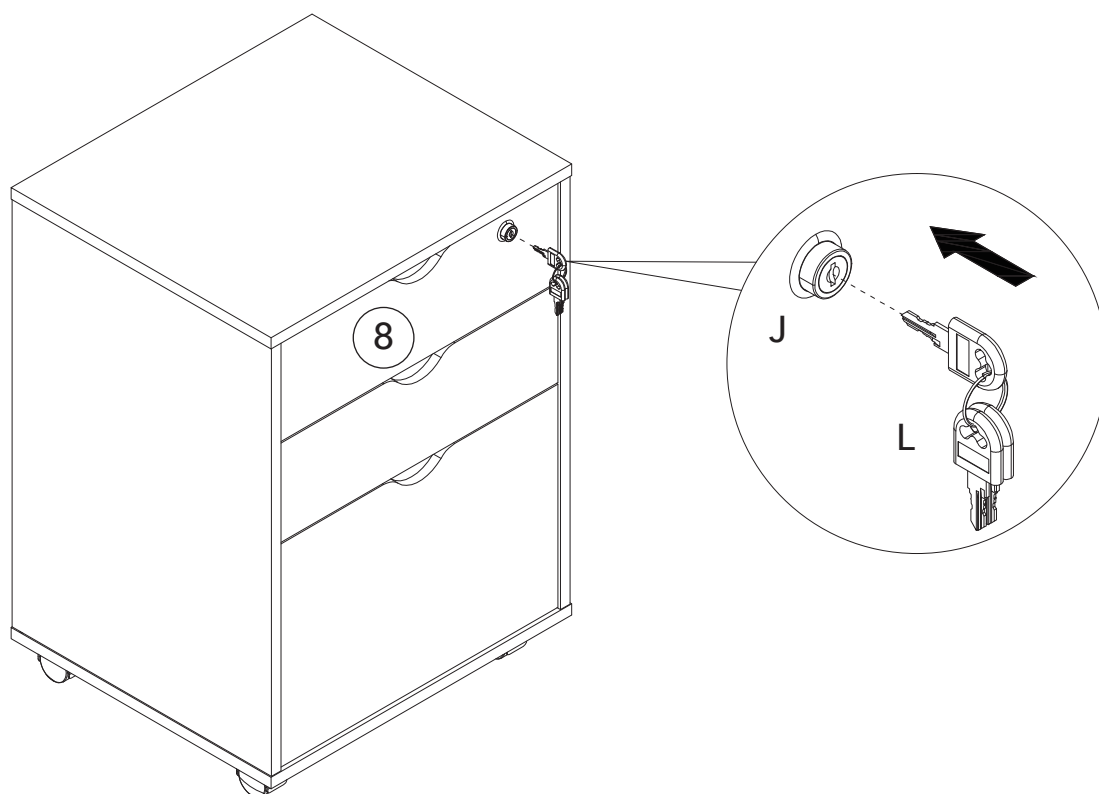
PASO 30



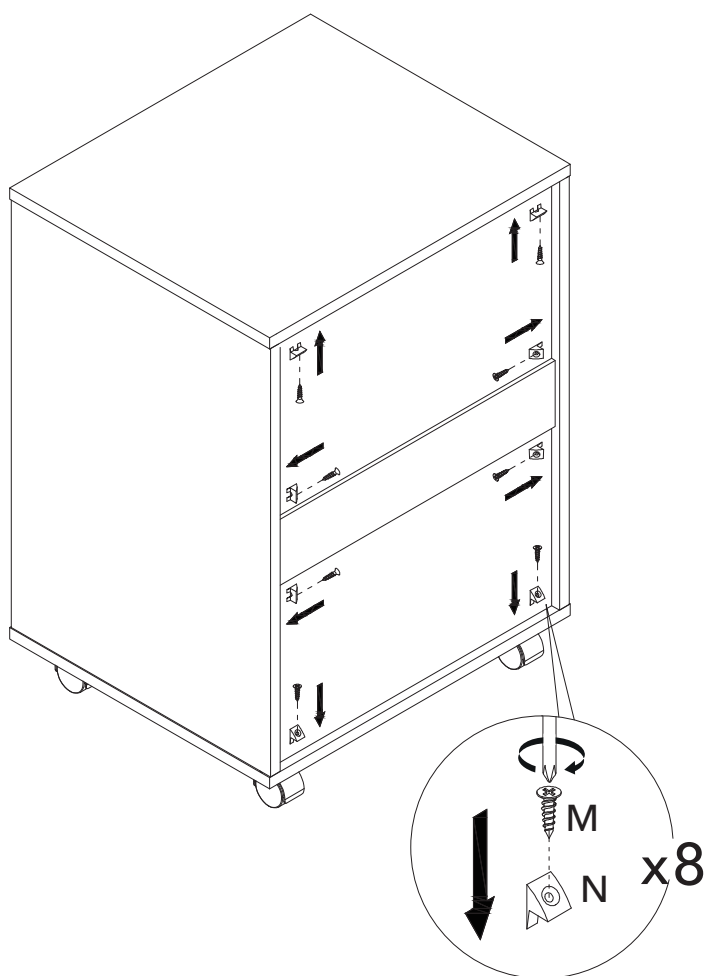
PASO 31



PASO 32



PASO 33





TODOS JUNTOS

Entre todos sí es posible
lograr un impacto real
ahorrando papel.

