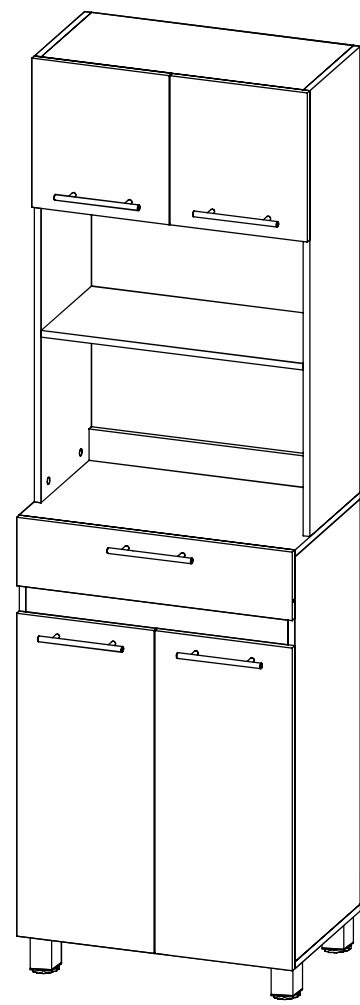


Deslice el cajón dentro del mueble / Slide the drawer inside the cabinet



Alto/ Height: 201,05 cm / 79,15 in
Ancho/ Width: 62,1 cm / 24,45 in
Fondo/ Depth: 40,8 cm / 16,06 in

LOTE No: _____



Al finalizar el ajuste, cubra las cajas con las tapas adhesivas/ After tightening all the panels, cover the minifix cams with the adhesive caps.

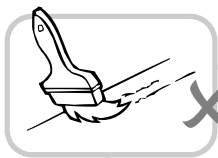


Al terminar de armar, desprenda los adhesivos (en caso de que queden residuos de pegamento, limpie la superficie con alcohol) / After finishing the assembly, take off the adhesives. (In case of glue residues, wipe them with alcohol)

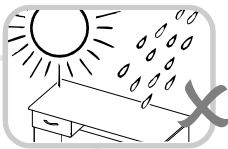
By: **RTA**® TEL (572) 691 17 00
m u e b l e s PBX (572) 695 91 81
CALI - COLOMBIA
www.rta.com.co

MODULO MICROONDAS LUNA
/Luna Microwave Cabinet

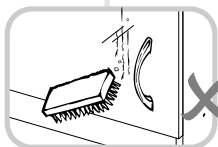
RECOMENDACIONES IMPORTANTES KEY RECOMMENDATIONS



NO pinte el mueble /
Do not paint the
furniture.



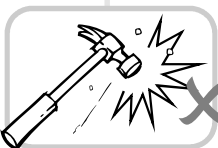
NO mojar o ubicar
a la intemperie /
Do not expose to rain
or direct sun.



NO lavar las manijas o
tiraderas con jabones o
elementos abrasivos /
Do not wash handles or
dumps with soap or
abrasives.



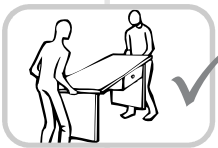
NO sobrecargue el mueble.
no exceda el peso de 30 kilos
para gabinetes de cocina /
Do not overload the cabinet.
Weight max. 66lbs
for kitchen cabinets.



NO golpear ni martillar
el mueble (hágalo sólo
donde se indique) /
Do not hit or hammer
the furniture (just do it
where is indicated).



NO permita que los niños
manipulen el mueble, puede
voltearse y lastimarlos /
Do not allow children to
handle the cabinets or
drawers, they could get hurt.

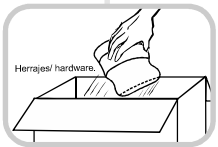


SIEMPRE levante el
mueble entre dos
personas, NO lo arrastre /
Do not drag the furniture.
Lift it between two people.



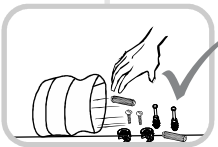
Limpie con paño seco,
/ Clean with a dry cloth.

HERRAJES BÁSICOS PARA MUEBLES RTA BASIC HARDWARE FOR RTA FURNITURE

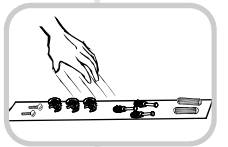


Herrajes/ hardware

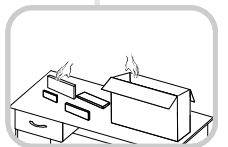
1. Abrir la caja del mueble
y buscar la bolsa con los
herrajes / Open the box
and look for the hardware
bag.



2. Abrir el paquete y
comprobar que el
contenido de las piezas es
correcto / Open the
package and verify that
the content of the pieces
is correct.



3. Separe los herrajes para
facilitar su identificación
durante el armado /
Separate hardware for easy
identification during
assembly.



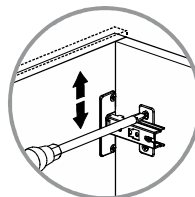
4. Arme el mueble en un lugar
limpio y en una superficie
plana / RTA furniture
must be assembled
in a clean place and on
a flat surface.

finlandek

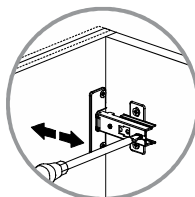
INSTALACIÓN BISAGRAS HINGES INSTALLATION



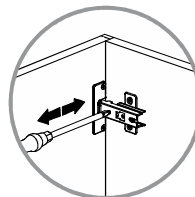
30



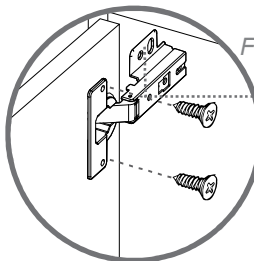
AJUSTE DE ALTURA
/ HEIGHT
ADJUSTMENT



AJUSTE DE
PROFUNDIDAD
/ DEPTH
ADJUSTMENT

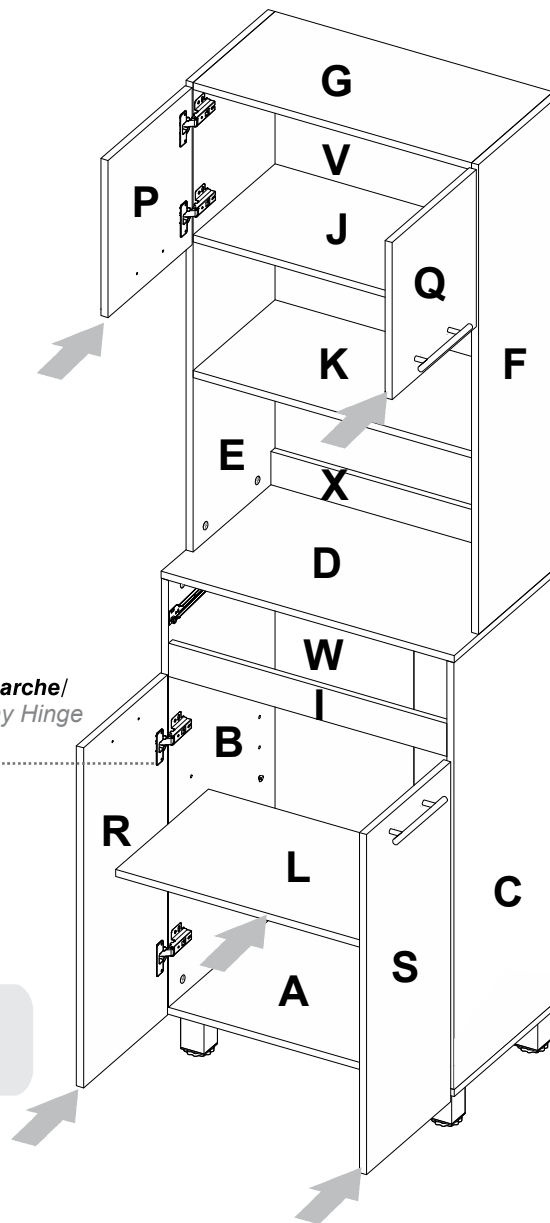


AJUSTE LATERAL
/ LATERAL
ADJUSTMENT



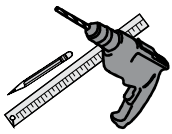
Bisagra parche/
Full Overlay Hinge

Deslice la pieza L dentro
del mueble / Slide the
L piece inside the cabinet



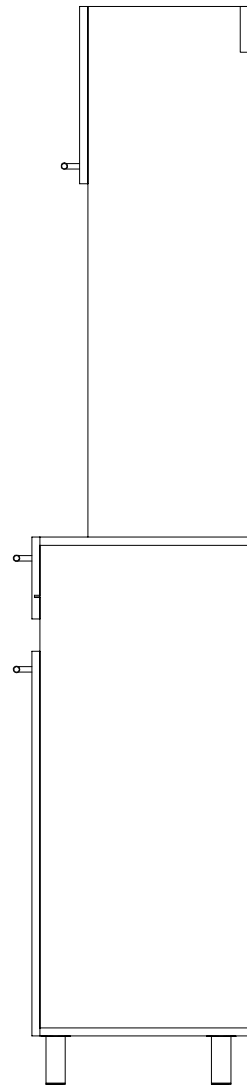
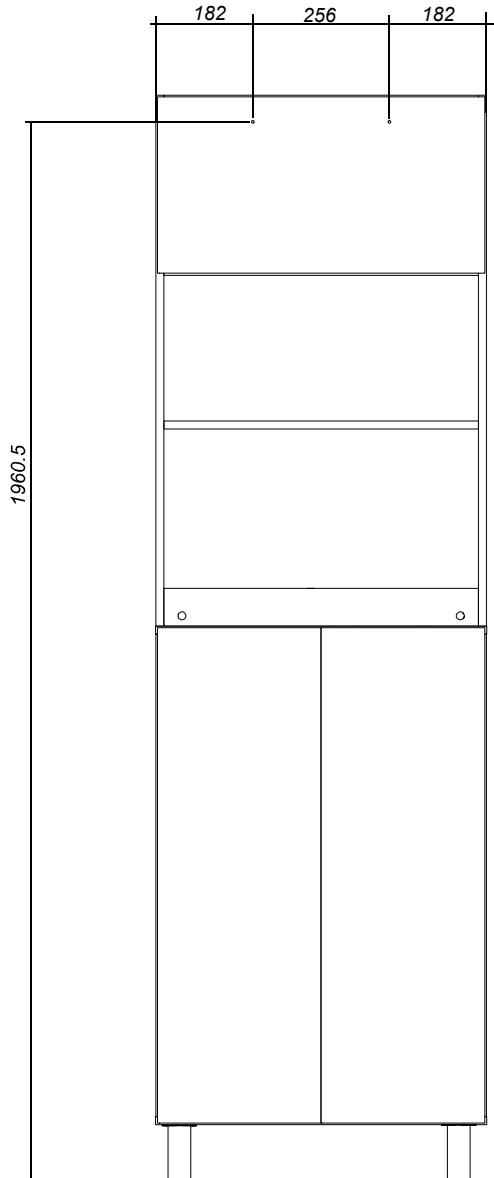
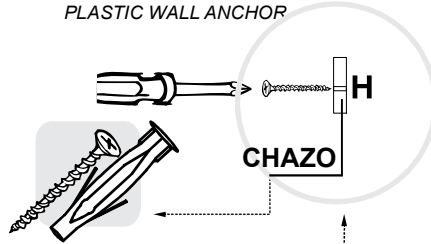
29

* Herramientas
NO incluidas/
Tools not
included



Utilizar una broca
de 5/16" para hacer
las perforaciones
en el muro/
Use a 5/16" drill bit
to drill the wall.

TORNILLO 2" 1/2 + CHAZO/
PLASTIC WALL ANCHOR

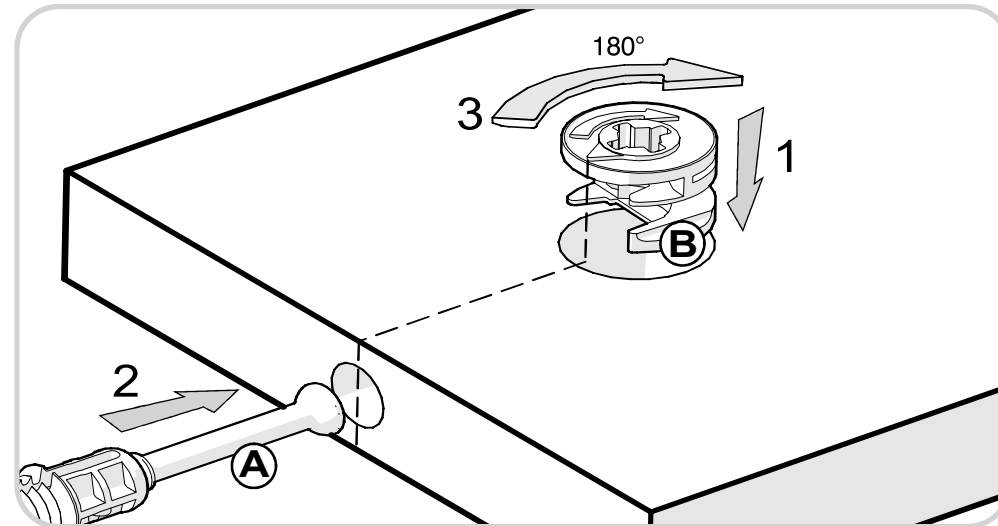


PARED/WALL

RECOMENDACIONES DE ENSAMBLE / ASSEMBLY RECOMMENDATIONS

El buen funcionamiento del mueble depende de un adecuado ensamblaje
An excellent furniture's performance relies on a solid and a suitable assembly.

MINIFIX / CONNECTOR - DOWELS



Sistema de unión compuesto por un perno (A) y una caja minifix (B).

(1) Se inserta la caja minifix dentro de la perforación ubicada en la cara de la pieza, la flecha debe apuntar siempre a la dirección de la perforación por donde entrará el perno.

(2) Se debe insertar el perno por su parte plástica en las perforaciones que se indiquen, luego se inserta la punta metálica en la perforación para que su cabeza quede al interior de la caja minifix.

(3) Girar la caja minifix 180° para apretar las dos piezas.

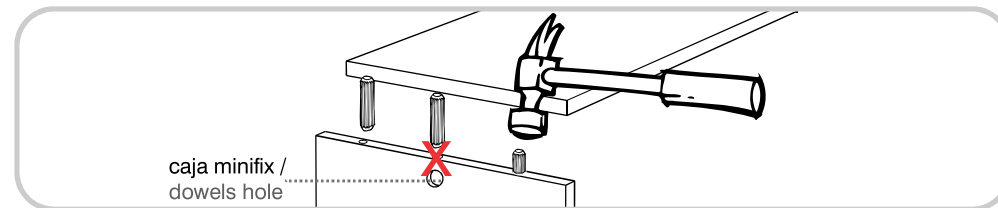
It's a fitting system made of a spreading bolt (A) and a minifix cam (B).

(1) Insert the minifix cam in the hole placed in the face of the panel with the arrow pointing towards the hole where the bolt will fit.

(2) Insert the bolt with its plastic base in the shown holes, then insert the metallic bolt head in the holes so it fits inside the minifix cam.

(3) Tight the panels by turning the minifix cam 180°.

TARUGOS O TAQUETES / FLUTED DOWEL PIN

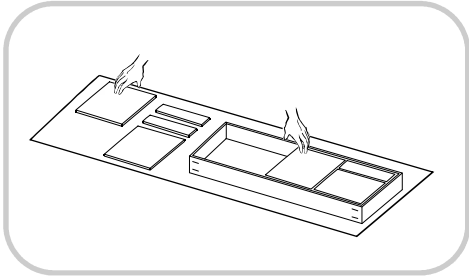


Es un pedazo de madera corto y grueso, de aproximadamente 3 a 10 cm de largo, que sirve para amarrar el mueble y darle resistencia.

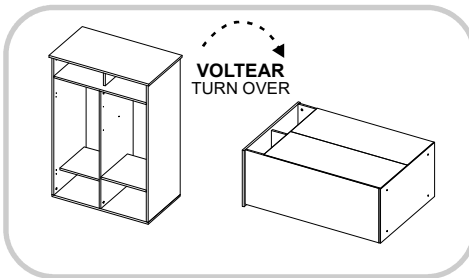
It's a short and thick piece of wood, 1,18 to 3,9 inches aproximately, which is used to tie the cabinet and give it resistance.

*Medidas en milímetros / Measured in milimeters

**RECOMENDACIONES
IMPORTANTES /
KEY RECOMMENDATIONS**

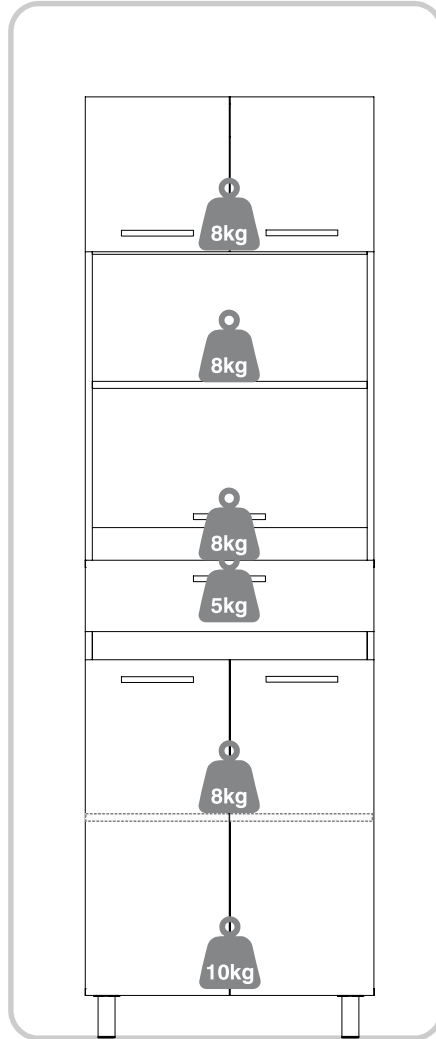


Se recomienda armar el mueble sobre la caja o una superficie lisa para no rayarlo. It is recommended to assemble the product on the box or on a flat surface to not scratch it.



Voltear el mueble cuidadosamente para ensamblar los fondos. Carefully turn over the cabinet to assemble the back panels.

**PESO MAX. SUGERIDO
EN MUEBLE (Kg) /
MAX SUGGESTED
LOAD (Kg)**

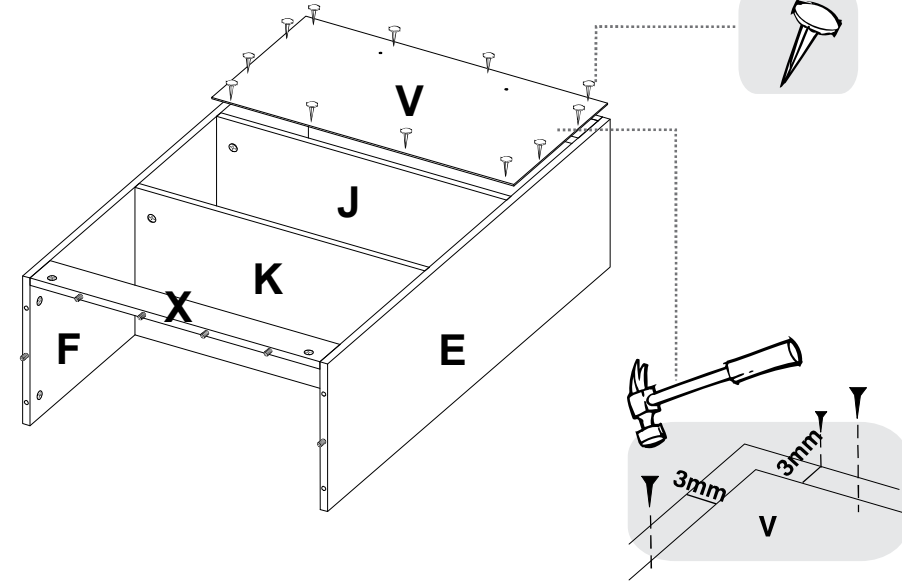


NOTA: La resistencia a las cargas puede variar dependiendo si es una carga distribuida o una carga puntual, las gráficas corresponden a cargas puntuales, NO exceder los pesos sugeridos /
NOTE: The load capacity depends if it is a point load or if it is an uniform distributed load, do not exceed the suggested loads.

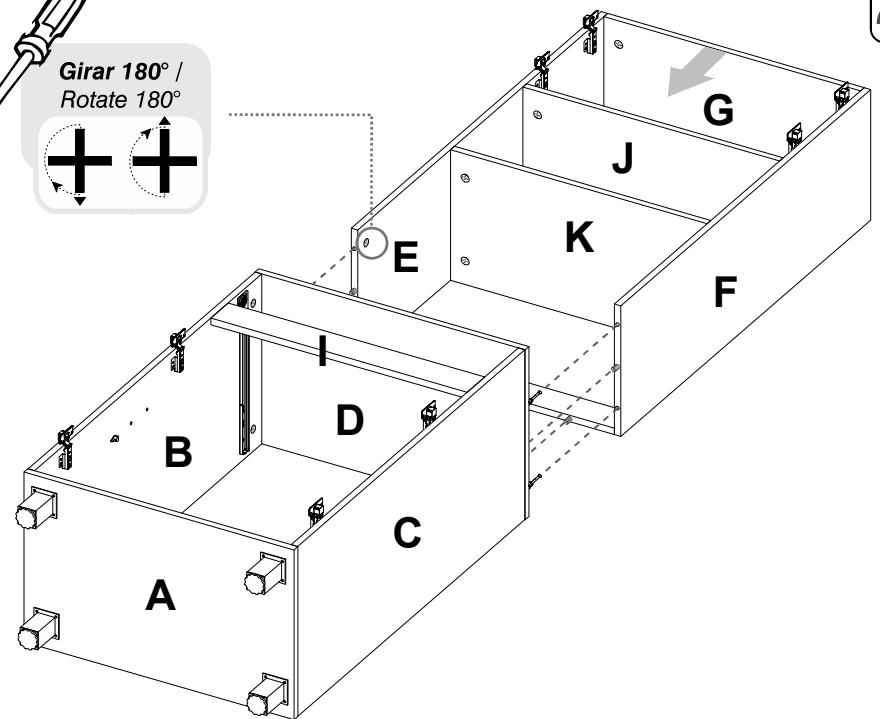
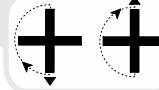


VOLTEAR EL MUEBLE CUIDADOSAMENTE / CAREFULLY FLIP THE CABINET

27

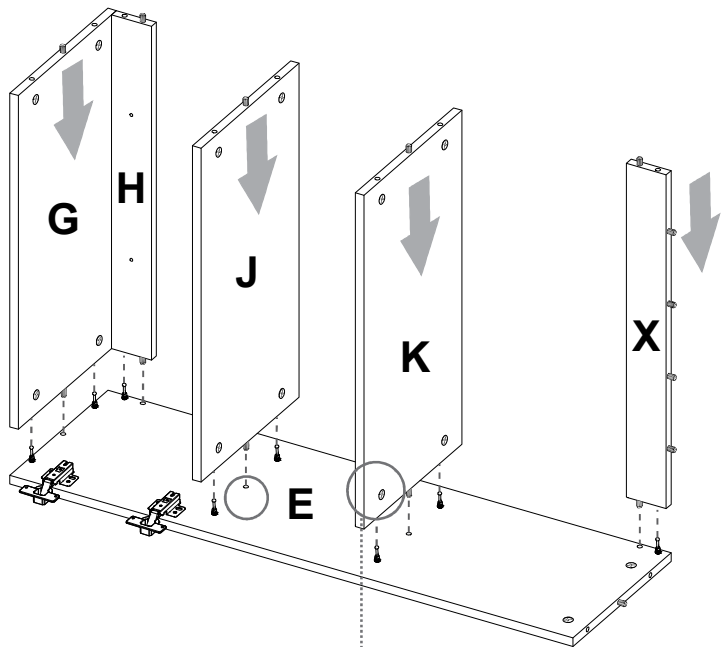


**Girar 180° /
Rotate 180°**

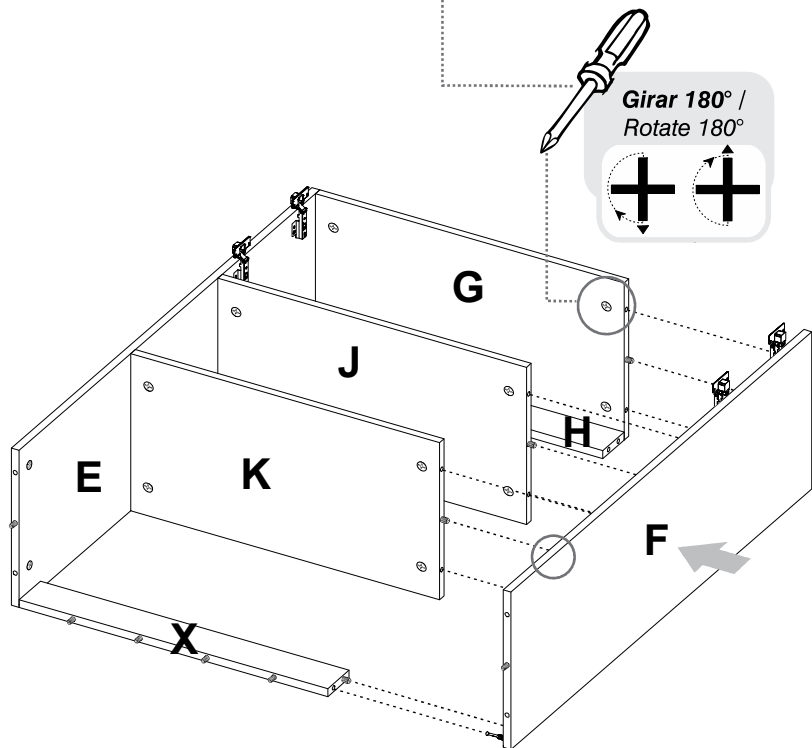


28

25



26



HERRAJES PARA ARMADO
ASSEMBLY HARDWARE

x32



Tarugo/Fluted Dowel Pin

x32



Perno minifix/ Spreading Bolt

x32



Minifix/ Minifix Cams

x32



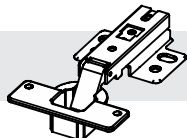
Tapa Adhesiva Minifix BLANCO/ Cover Caps

x4



Tornillo Ensamble 2"/Drywall Screw

x8



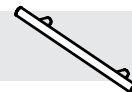
Bisagra Parche/ Full Overlay Hinge

x32



Puntilla/ Nail

x5



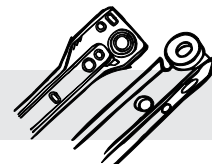
Manija/ Handle

x16



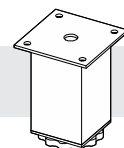
Tornillo Lámina/ Sheet Screw

x1



Riel / Drawers Slide

x4



Pata Acero/ Steel Leg

x4



Soporte entrepaño/ Shelf Support

x2

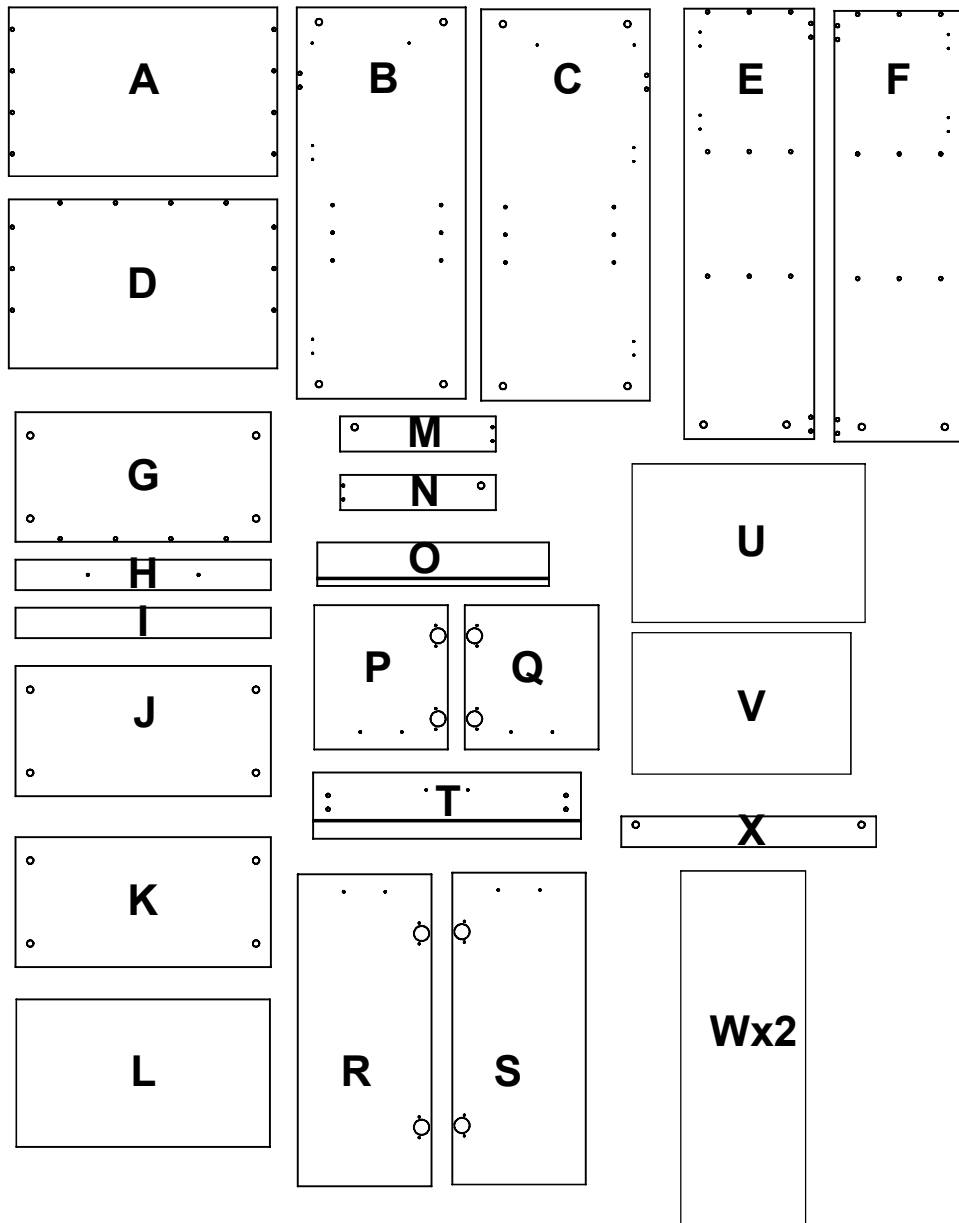


Tornillo 2" + Chazo Mariposa/ Wall Anchor



TENER PRECAUCIÓN AL ABRIR LA BOLSA DE HERRAJES PARA NO EXTRAVIAR NINGUNO. COMPRUEBE QUE EL CONTENIDO DE LAS PIEZAS SEA EL CORRECTO. EN CASO QUE FALTE ALGUNA PIEZA O ESTE DEFECTUOSA DEVUELVA LAS PIEZAS AL ALMACÉN CON SU FACTURA PARA EFECTUAR EL CAMBIO DE LAS PIEZAS Y/O LOS HERRAJES LO MÁS PRONTO POSIBLE. / PLEASE BE CAUTIOUS WHEN OPENING THE HARDWARE BAG TO NOT LOSE ANY. CHECK THE CONTENTS OF THE PARTS ARE CORRECT. IF ANY PART IS MISSING OR IMPERFECT PLEASE RETURN THE PARTS TO THE STORE WITH THE PRODUCT INVOICE ATTACHED TO MAKE EFECTIVE THE REPLACEMENT OF THE IMPERFECT PIECES OR HARDWARE AS SOON AS POSSIBLE.

PIEZAS DE ARMADO
ASSEMBLY PARTS

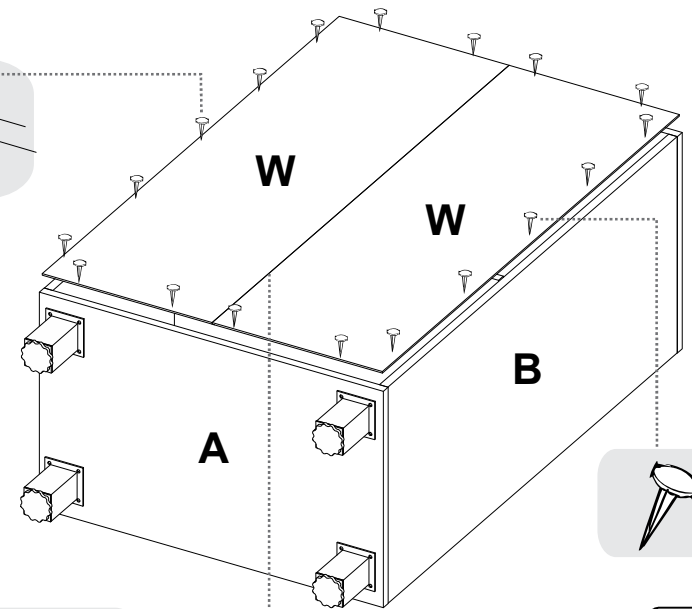
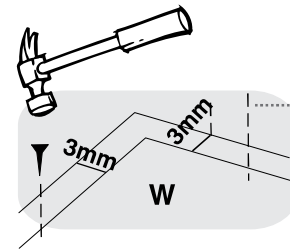


ANTES DE EMPEZAR A ARMAR EL MUEBLE LEA DETENIDAMENTE LAS INSTRUCCIONES. SE RECOMIENDA ARMAR EL MUEBLE SOBRE LA CAJA O SOBRE UNA SUPERFICIE LISA Y CUBIERTA, PARA NO RAYARLO / BEFORE STARTING TO ASSEMBLE THE CABINET, CAREFULLY READ THE INSTRUCTIONS. IT IS RECOMMENDED TO ASSEMBLE THE FURNITURE ON THE BOX OR ON A FLAT AND COVERED SURFACE IN ORDER TO NOT SCRATCH THE PRODUCT.



VOLTEAR EL MUEBLE CUIDADOSAMENTE PARA ENSAMBLAR LOS FONDOS / CAREFULLY FLIP THE FURNITURE

23



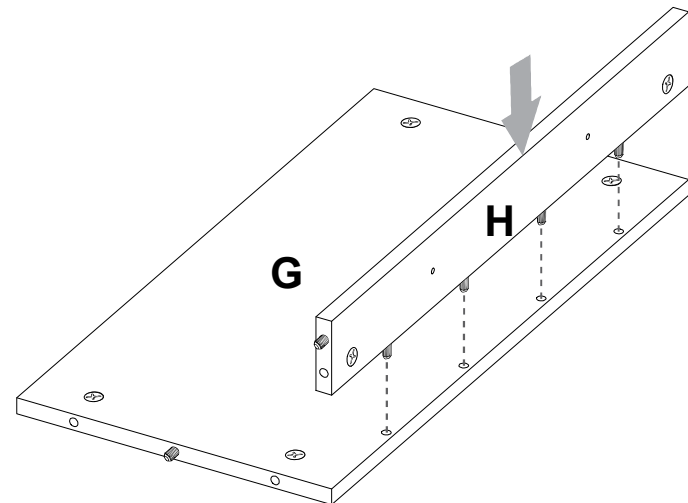
Refuerce los fondos con un tramo largo de cinta ancha / use tape for the backs



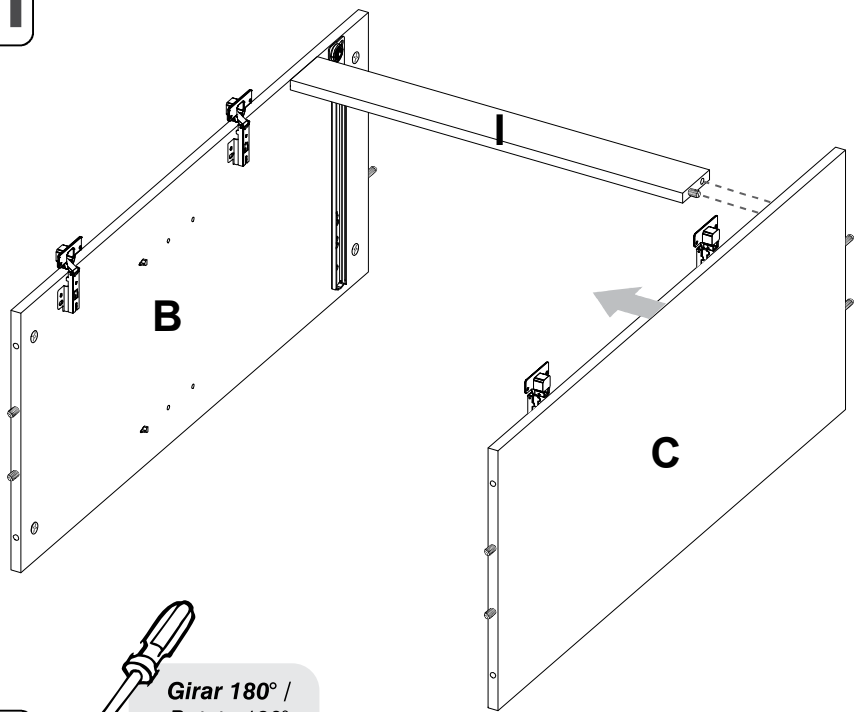
CINTA NO INCLUIDA / TAPE NOT INCLUDED



24



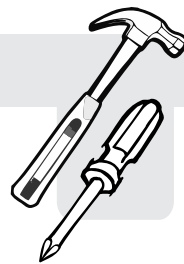
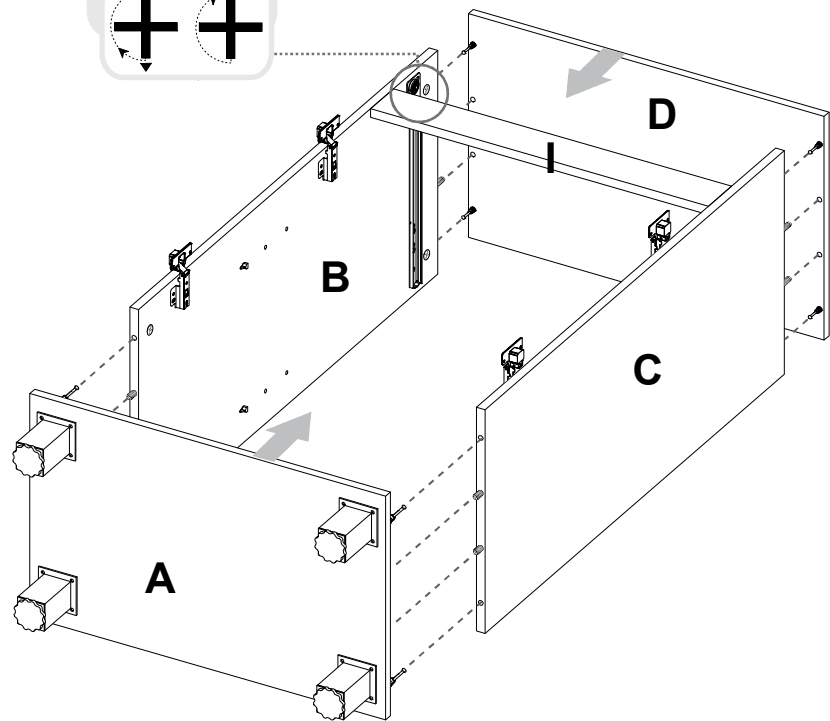
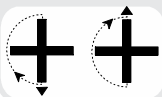
21



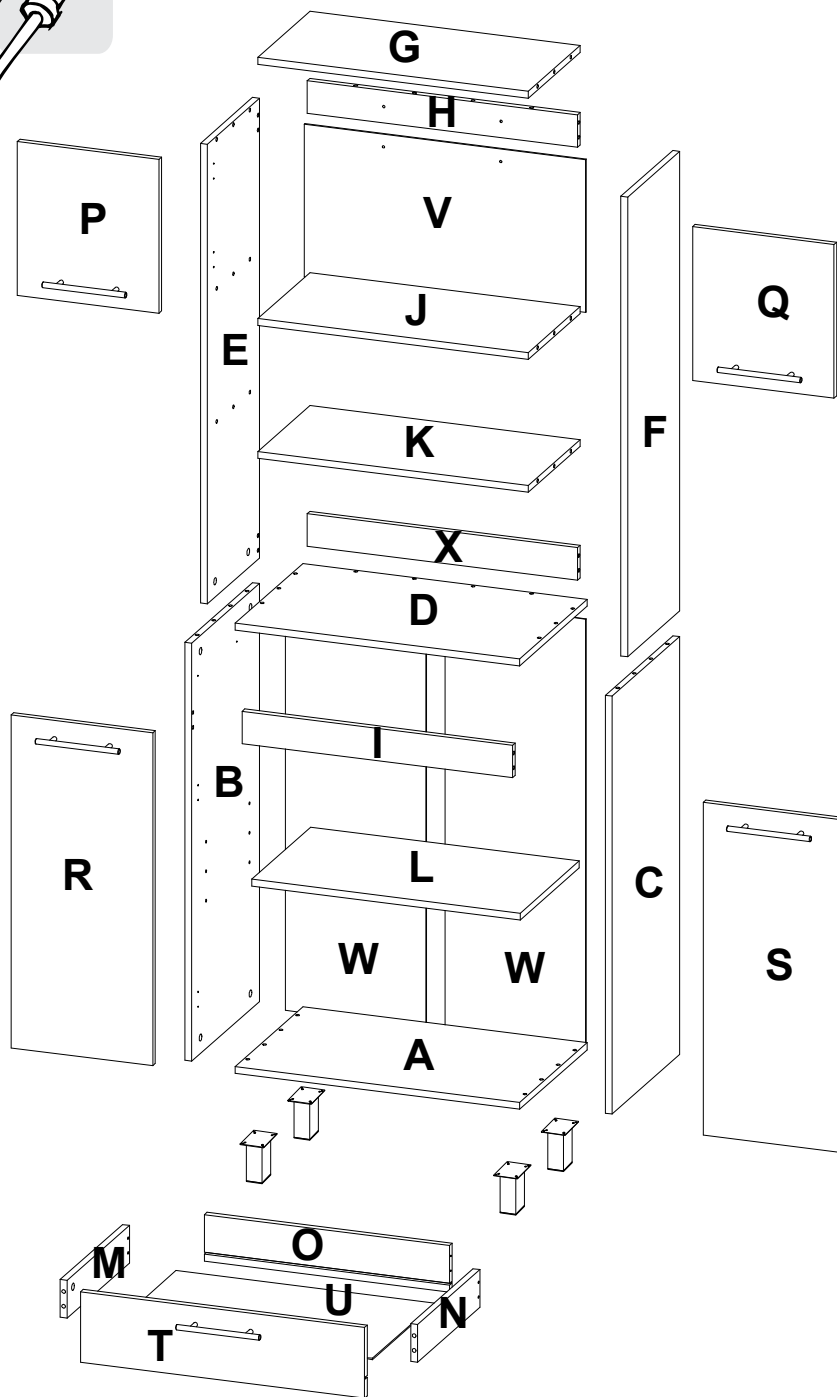
22



Girar 180° / Rotate 180°



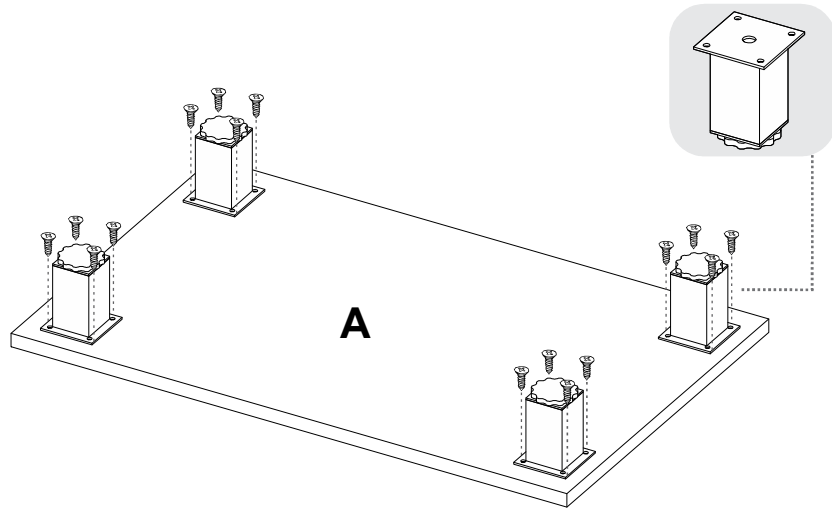
*(Herramientas NO incluidas) *Tools NOT Included



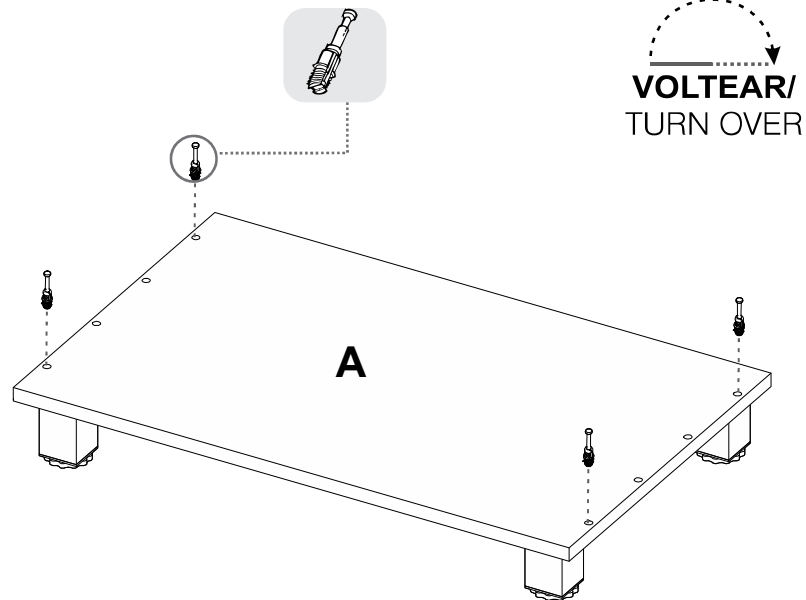
1



SE RECOMIENDA ARMAR EL MUEBLE ENTRE DOS PERSONAS /
IT IS RECOMMENDED TO ASSEMBLE THE PRODUCT BETWEEN TWO PEOPLE

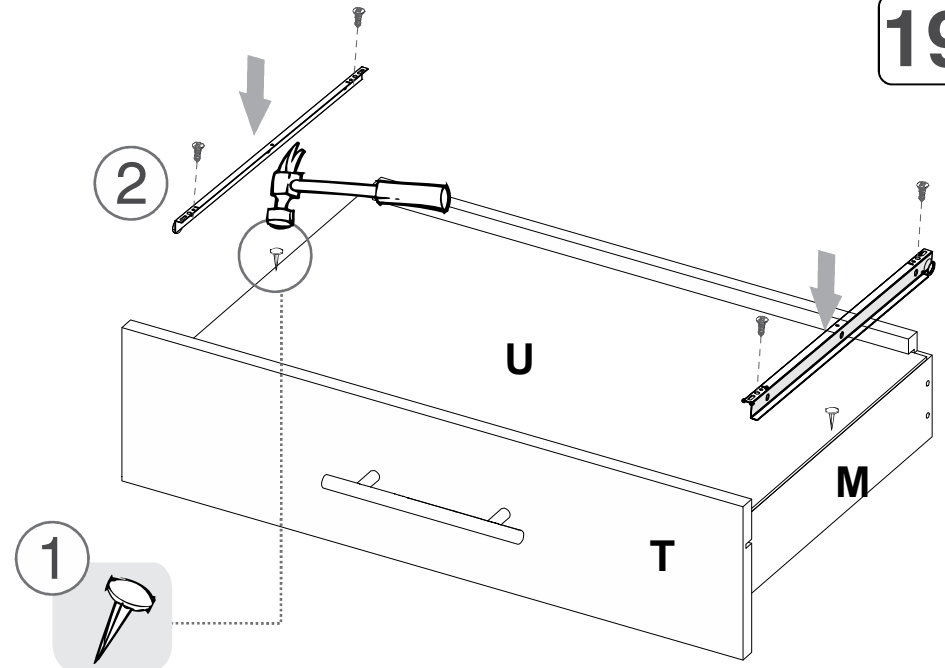


2

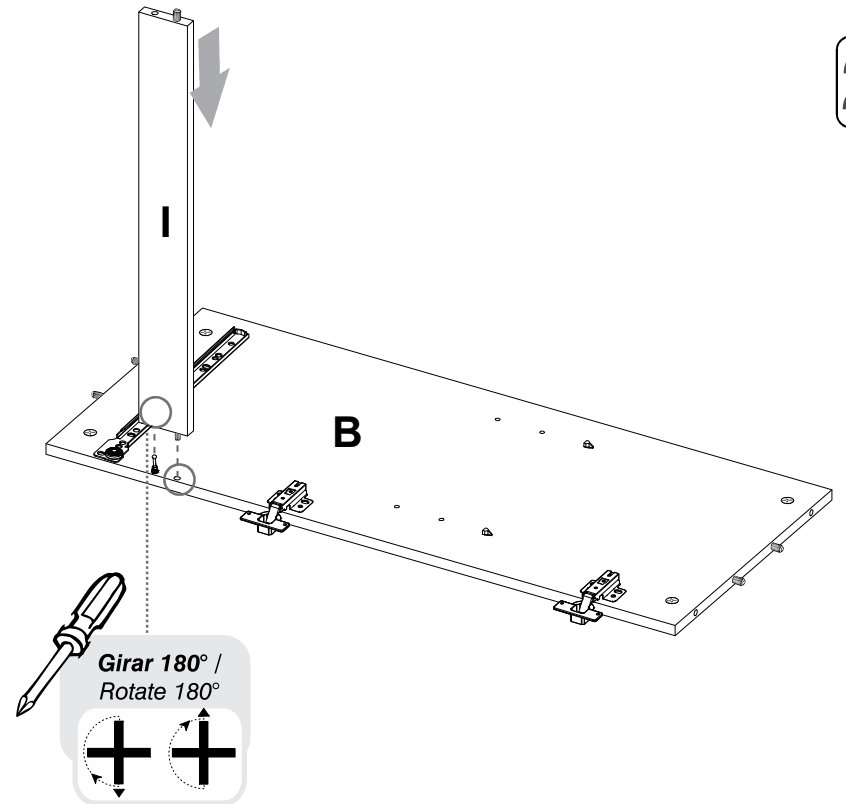


**VOLTEAR/
TURN OVER**

19

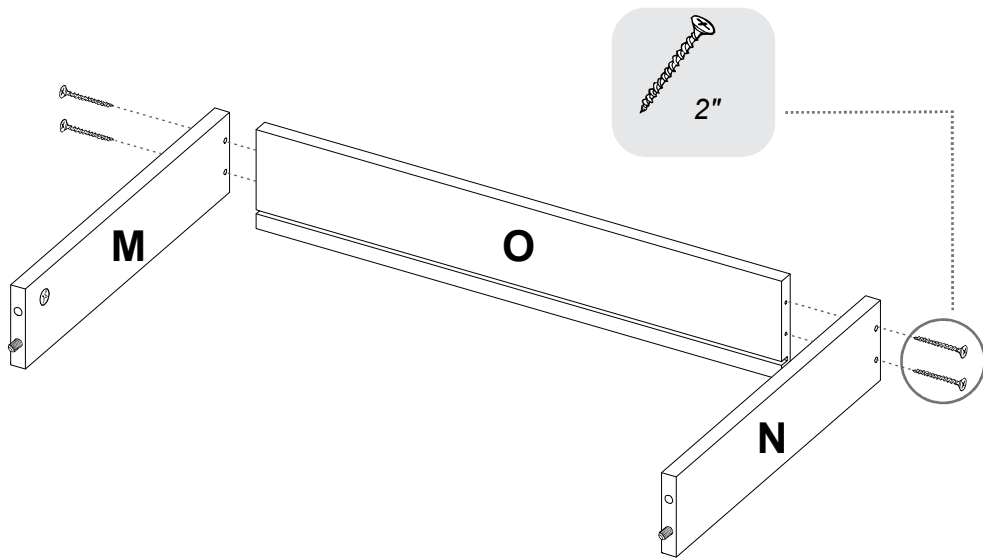


20

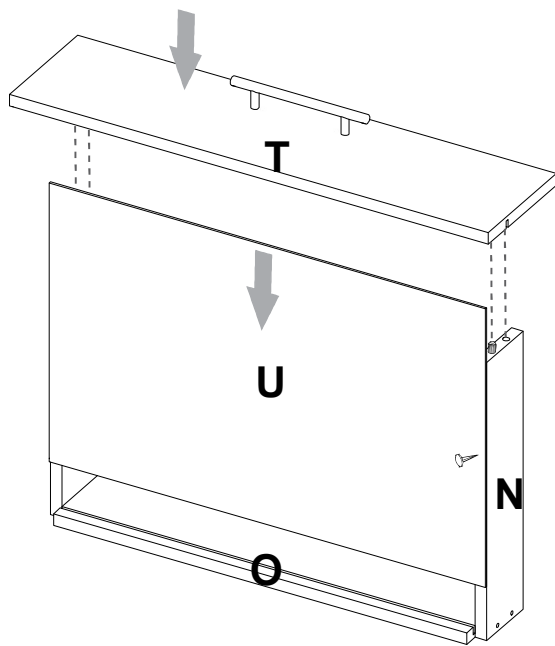


**Girar 180° /
Rotate 180°**

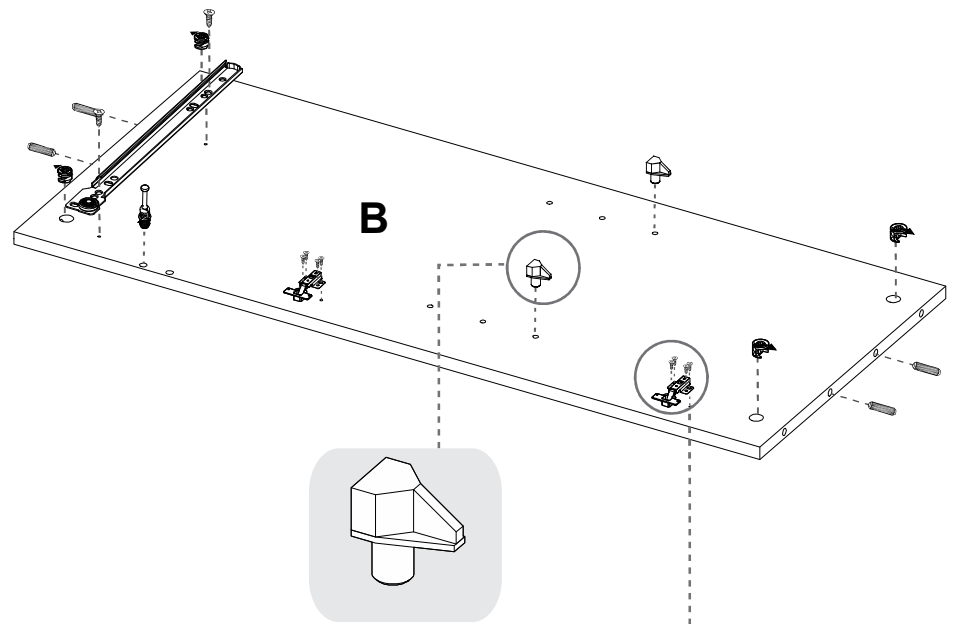
17



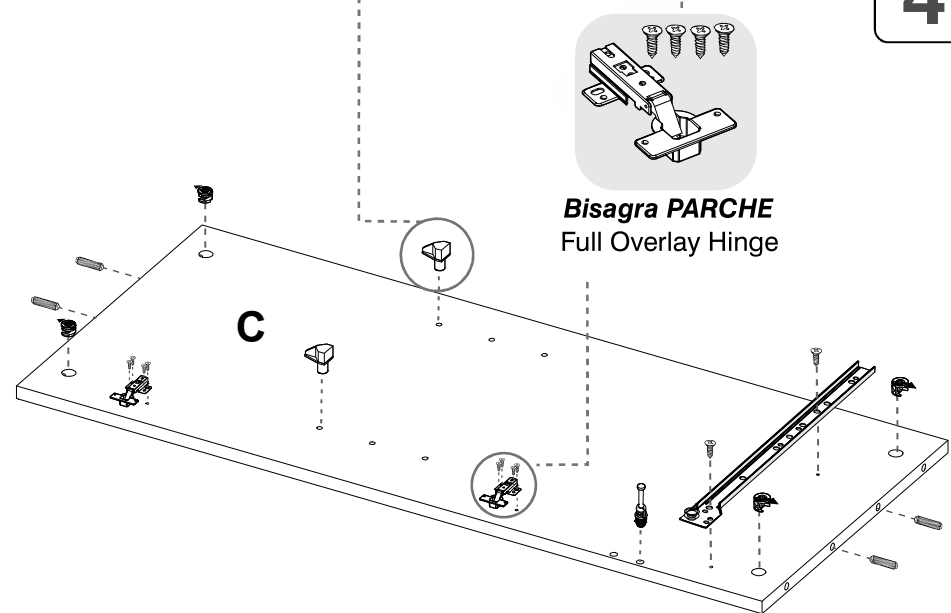
18



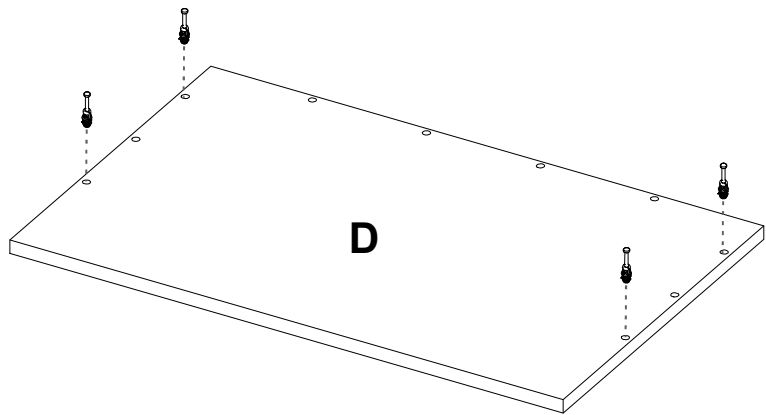
3



4

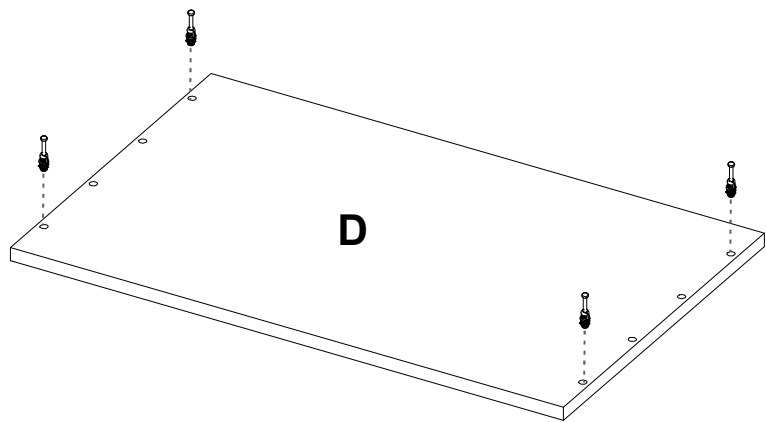


5

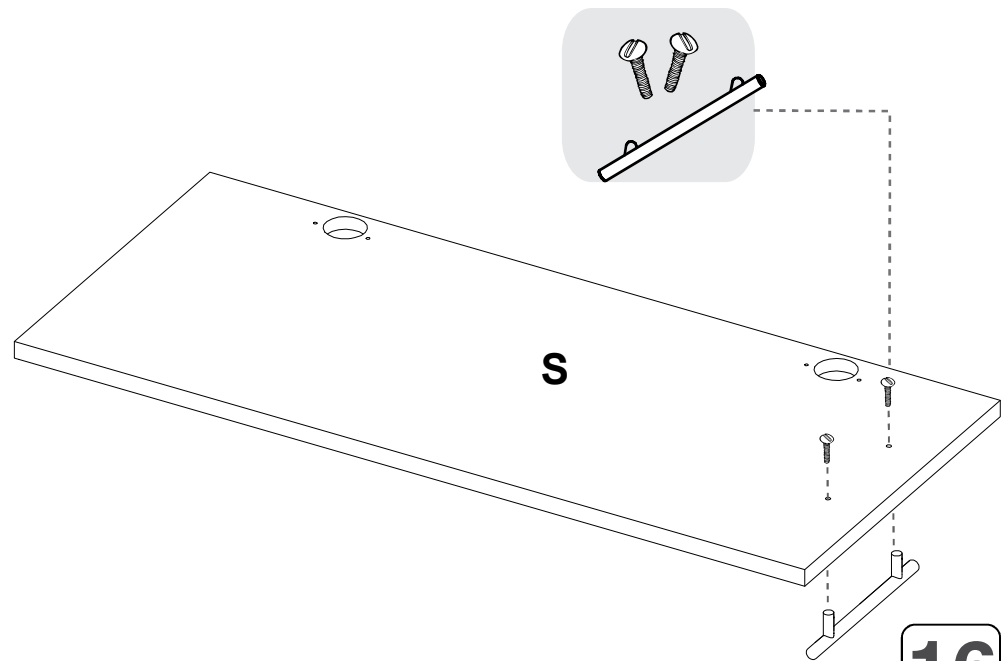



VOLTEAR/
TURN OVER

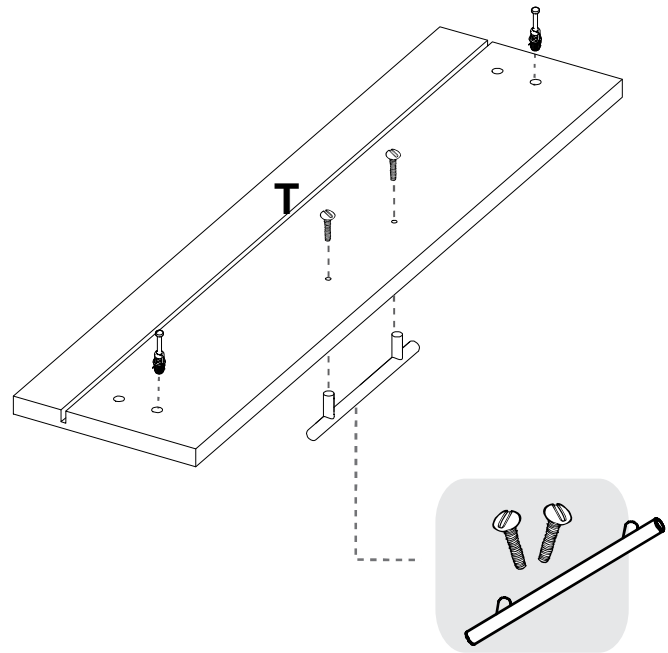
6



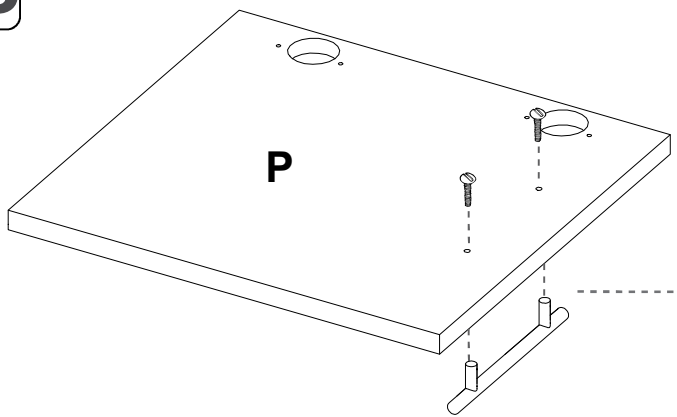
15



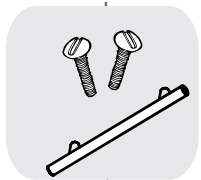
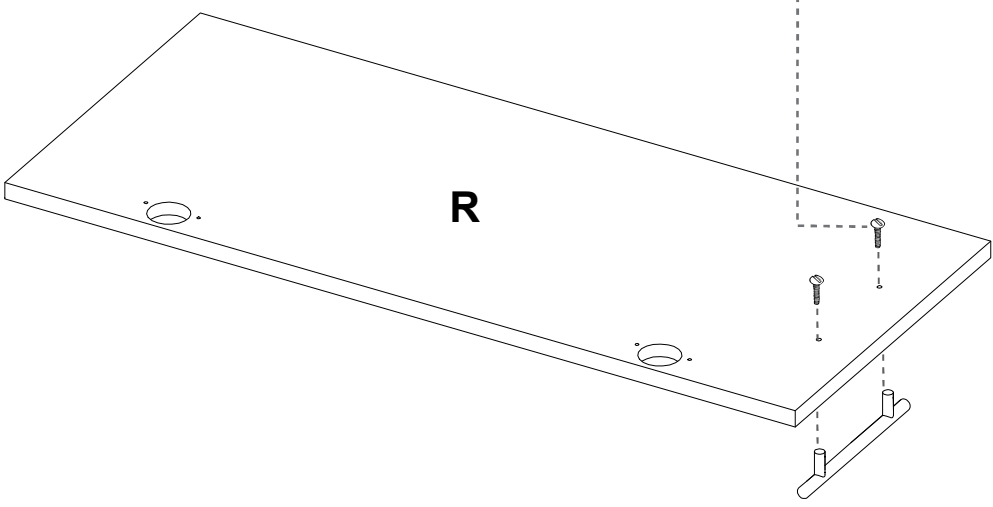
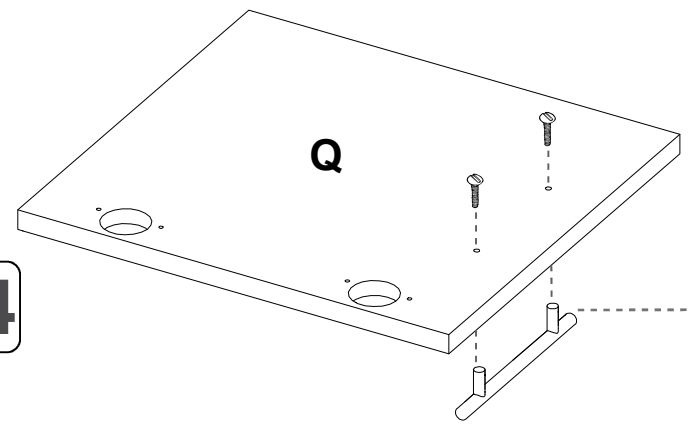
16



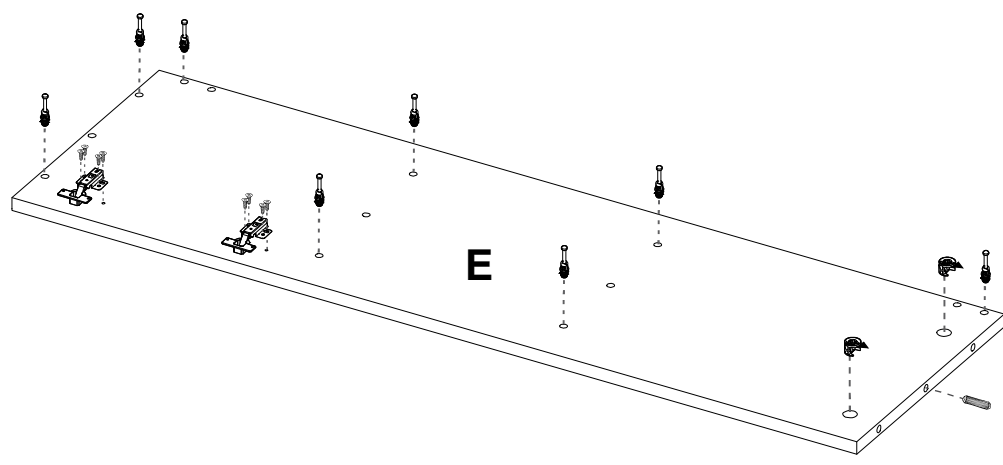
13



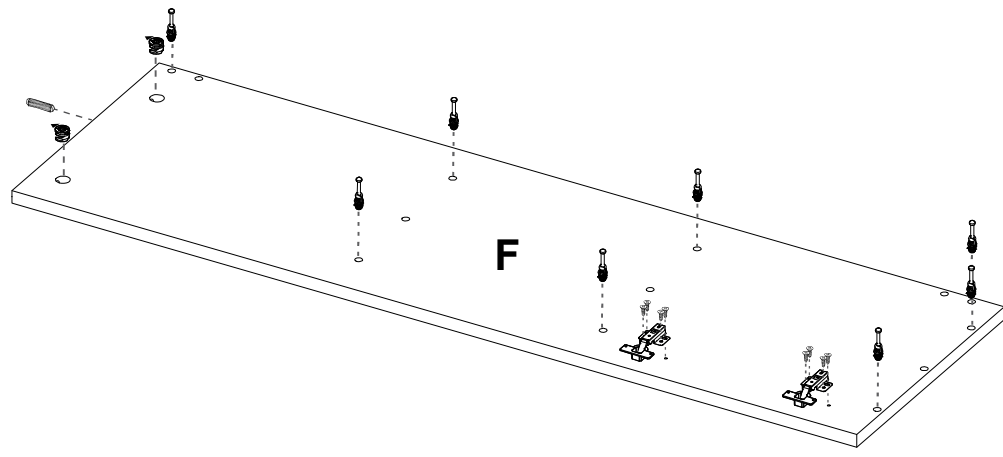
14



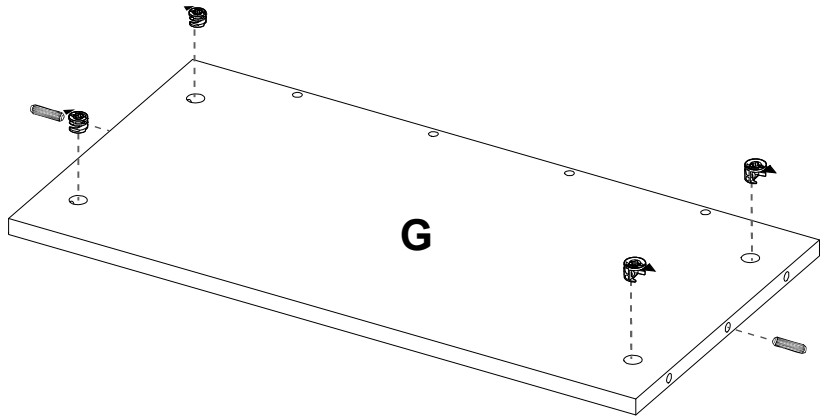
7



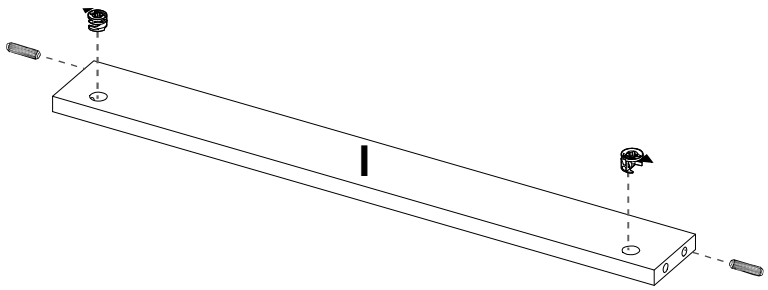
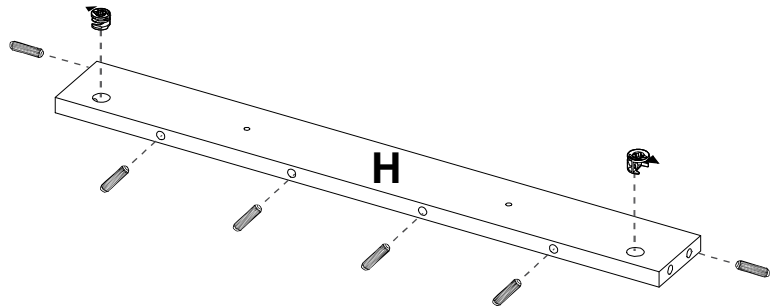
8



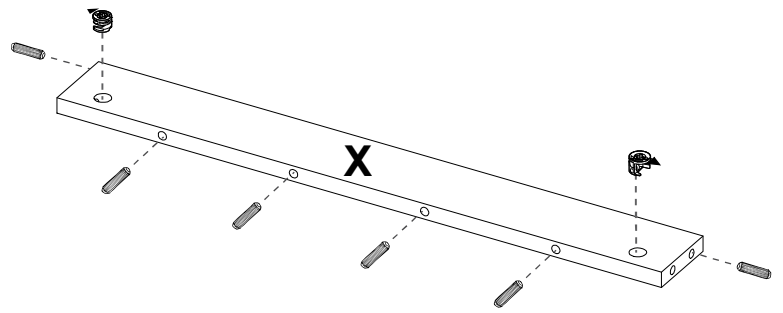
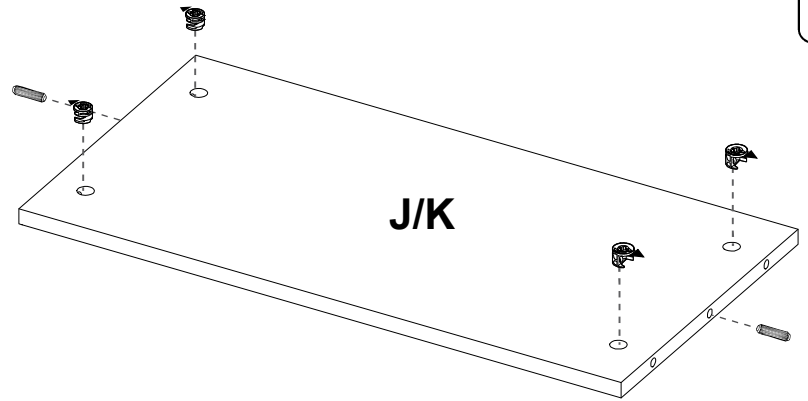
9



10



11



12

